

EMEA VERSION

# POLARIS SPORTSMAN

## 2022

ACCESSORIES + APPAREL





# FORGE YOUR OWN PATH



The ATV that defined the industry, SPORTSMAN combines legendary smoothness, unstoppable versatility and an ease of use that the competition continues to chase, which is why SPORTSMAN is chosen by more ATV owners. Whether you're tearing up the trails, working out in the fields, or navigating the wilderness for the perfect hunt, there is a SPORTSMAN story to be told.



# 2022 LINEUP

**570**

**P. 14**

## RECREATION & UTILITY



**SPORTSMAN 570  
(EPS/EBS)**

## TOURING



**SPORTSMAN TOURING  
570 (EPS/EBS)**

## WORK



**SPORTSMAN 570 6X6**



**SPORTSMAN 570 X2**

## SPECIAL EDITION



**SPORTSMAN 570 AGRI PRO**



**SPORTSMAN 570 HUNTER**



**SPORTSMAN 570 BLACK LE**



**SPORTSMAN 570 OHLINS**



**SPORTSMAN X2 570 NORDIC PRO**

**XP 1000 / XP 1000 S**

**P. 26**

## RECREATION & UTILITY



**SPORTSMAN XP 1000**



**SPORTSMAN XP 1000 S**

## TOURING



**SPORTSMAN TOURING XP 1000**

**SCRAMBLER**

**P. 34**



**SCRAMBLER XP 1000**



**SCRAMBLER XP 1000 S**

**YOUTH**

**P. 36**



**OUTLAW 70**

# CONTENTS

**MODEL YEAR 2022**

**02**

**WINCHES**

**10**

**570**

**12**

WINCHES, PROTECTION & RACKS .....	14
COMFORT, AUDIO & STORAGE .....	16
WINDSHIELDS .....	18
570 6X6, 570 TOURING & 570 X2 .....	20
2014-2020 MODELS .....	22

**XP 1000 / XP 1000 S**

**24**

WINCHES, RACKS & PROTECTION .....	26
STORAGE, AUDIO & COMFORT .....	28
WINDSHIELDS .....	30

**SCRAMBLER XP 1000 S**

**32**

**YOUTH: OUTLAW 70 EFI**

**34**

**COMMON ACCESSORIES**

**36**

GLACIER PLOW SYSTEMS .....	36
TRACKS .....	38
WHEELS & TYRES .....	40
LIGHTING .....	46
HUNT .....	48
POLARIS NORTHSTAR COOLERS .....	50

**PARTS & GARAGE**

**54**

MAINTENANCE .....	54
OIL & LUBRICANTS .....	56
HD PARTS .....	58
SERVICE PARTS .....	60
CLEANERS & TRAILERING .....	62



# MODEL YEAR 2022

TAKE YOUR SPORTSMAN  
TO THE NEXT LEVEL

## GO FURTHER

WITH YOUR SPORTSMAN AND  
MAKE IT YOUR OWN WITH POLARIS  
ENGINEERED ACCESSORIES



### MOST POPULAR ADD-ONS

Racks	P. 26
Storage	P. 28
Windshields	P. 30
Wheels & Tyres	P. 40





#### MOST POPULAR ADD-ONS

Racks	P. 26
Storage	P. 28
Wheels & Tyres	P. 40
Lighting	P. 46

**ULTIMATE  
TRAIL**



# DESIGNED



Designed by the same people  
who designed your vehicle.

# TESTED



Extensively tested in the field so  
you ride with 100% confidence.

**WE HOLD OUR  
PARTNERS  
TO THE SAME  
STANDARDS**

**PRO ARMOR**



WHEELS, TYRES & LIGHTING DESIGNED  
WITH POLARIS TO MAXIMISE PERFORMANCE  
P. 40, 46



A GLOBAL LEADER IN AUDIO INNOVATION,  
DESIGN & ENGINEERING  
P. 17, 29



# KEEP YOUR STANDARDS HIGH. WE DO.

## TRUSTED



65 years in the business.  
The #1 name in Off-Road.

### **RIGID**

PRODUCTS SO GOOD THEY REPLACE  
OR REPAIR THEM FOR LIFE  
P. 46

### **KOLPIN** OUTDOORS

MAKING PRODUCTS FOR  
AVID SPORTSMEN SINCE 1943  
P. 48



# ENGINEERED FOR MORE



## LOCK & RIDE®

### CARGO VERSATILITY

Lock & Ride mounting locations allow for limitless customization to let you work the way you want.

**P. 17, 28**



Ensuring Polaris Engineered Accessories fit and work in sync with your machine is the most critical phase of testing and validation. With seamless integration, you can trust that any Polaris accessory you install will enhance your interaction beyond your expectations.



**PRO** PRO HEAVY DUTY SERIES

## WINCHES

### INTEGRATED WINCH MOUNT & PRE-WIRED

Designated mounting points and pre-wired contactors ensure a perfect fit and the strongest place to attach the Polaris Engineered winch - the most dependable winch for your SPORTSMAN. With wiring built right into the vehicle, we made this the easiest SPORTSMAN winch ever made to install.

**P. 10**

## **GLACIER** PLOW SYSTEM

### INTEGRATED PLOW MOUNT

The attachment points for the Glacier Plow System are integrated right at the factory and feature an innovative drive-up and go installation process.

**P. 36**

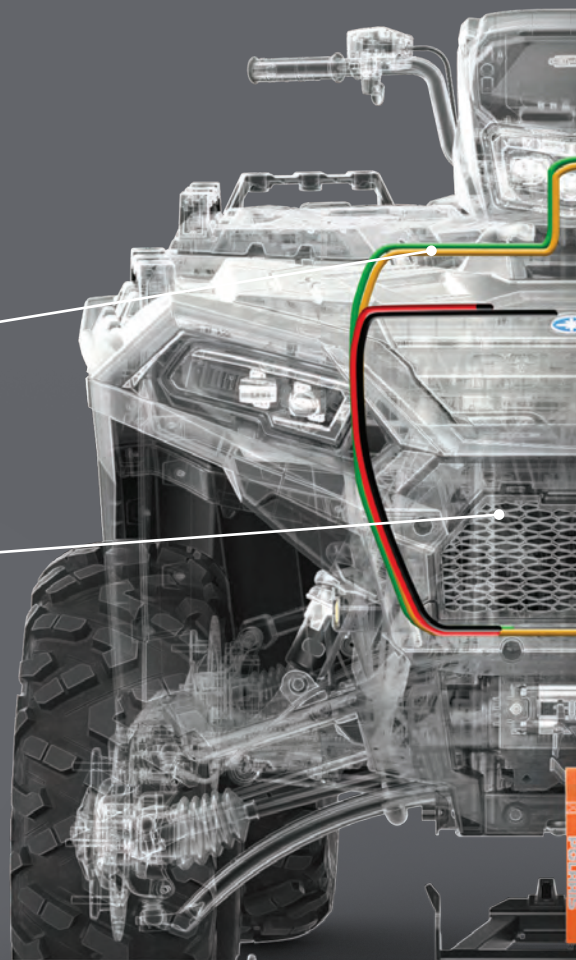


# SUPERIOR INTEGRATION

## POLARIS ENGINEERED WINCHES

- ✓ Tested 1,200+ pulls at max load, it works when you need it to
- ✓ Built for winter, withstands  $-29^{\circ}\text{C}$  temperatures
- ✓ **Pre-wired chassis**  
Factory-installed wiring makes the controls simple to install. Mount the winch, connect the wires and trust that everything is routed safely, securely, and properly.
- ✓ **No need to cut panels**
- ✓ Sealed motor and heavy-duty gears operate fully submerged underwater
- ✓ Military tested and approved

TO LEARN MORE ABOUT  
POLARIS ENGINEERED WINCHES,  
SEE P. 10









Right from the factory, your vehicle is built to make essential accessories like winches and plows easy to use day-in and day-out. Mounting brackets are designed into the oversized factory bumper and wiring is routed securely and properly. When it comes to SPORTSMAN, Polaris Engineered Accessories make work easier so you can get more done.

**POLARIS**  
**ENGINEERED**

## **GLACIER** PLOW SYSTEM



-  Easily engage and disengage the plow system from your **SPORTSMAN**
-  No loss of factory ground clearance when not plowing
-  Don't have to crawl under the machine to release the plow blade from the vehicle
-  No trimming of vehicle plastic required to mount plow or winch

TO LEARN MORE ABOUT THE  
GLACIER PLOW SYSTEM,  
SEE **P. 36**



# WINCHES



**ADD A PLOW  
P. 36**

## DEPENDABLE. TOUGH. BUILT FOR THE OFF-ROAD.

A Polaris Engineered winch is designed to help you get the job done right, get you on your way faster and prepare you for the unexpected.

## WHY POLARIS?

Polaris off-road vehicles are engineered with designated mounting points and wiring for seamless install of Polaris Engineered winches.



TESTED **1,200+**  
PULLS AT MAX LOAD



BUILT TO WITHSTAND  
**-29° C** TEMPERATURES



OPERATES FULLY  
SUBMERGED



MILITARY  
TESTED & APPROVED

## REPLACEMENT PART



### REPLACEMENT STEEL CABLE

- 1588 kg winch series - 15.2 m
- » 2878890



### RECOVERY STRAP

- 5cm x 9.1 m (8165 kg)
- Comes with carry bag
- » 2884033

## FEATURES & BENEFITS

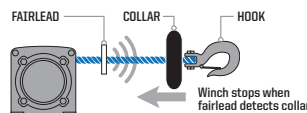
### ALL POLARIS ENGINEERED WINCHES COME WITH:

- ✓ INTEGRATED WIRING, MOUNT, PREASSEMBLED
- ✓ HOOK WITH STRAP
- ✓ CUT STEEL GEARS & SEALED DRIVETRAIN
- ✓ SEALED PERMANENT MAGNET MOTOR



Retrieve cable 5x as fast as standard mode on other Polaris winches. Get back to riding or complete your task quicker.

1. Set winch dial to N (Neutral) to manually pull the rope out and secure the hook to your anchor point
2. Set winch dial to L (Low) for maximum pulling power while winching your load
3. Set winch dial to H (High) for retrieving the rope 5x faster with Rapid Rope Recovery



Auto Stop technology protects and extends the life of your winch by automatically stopping the winch at the end of pull to prevent over-spooling. While plowing, it prevents the plow frame from bending by stopping the winch once the plow has been lifted.



With its lightweight, yet extremely strong, design and superior flexibility, this 15.2 m long synthetic rope is easy to handle and can stand up to any tough job.



This convenient remote operates your Polaris winch wirelessly from within 15.2 m of the vehicle. Operate your winch safely outside your vehicle while on the job site or trails.

## MODEL

**450 H.O.** '21-22  
**570** '21-22

**450 H.O.** '16-20  
**570** '14-20  
**X2 570** '15-21  
**TOURING 570** '14-21  
**6X6 570** '17-21

**850** '12-22  
**XP 1000** '15-22  
**TOURING XP 1000** '15-22  
**TOURING 850** '15-22  
**SCRAMBLER 850** '14-22

**SPORTSMAN XP 1000 S** '20-22  
**SCRAMBLER XP 1000 S** '20-21



**PRO** PRO HEAVY DUTY SERIES

## TOP-OF-THE-LINE FEATURES

BEST FOR PLOWING, HEAVY-DUTY OUTDOOR CHORES & TRAIL RIDING



**PRO** PRO HEAVY DUTY SERIES

**HD** HEAVY DUTY SERIES

## BUILT FOR THE OFF-ROAD

BEST FOR THE CASUAL OFF-ROAD RIDER



**HD** HEAVY DUTY SERIES



NOT AVAILABLE

### ADD AUTO STOP TECHNOLOGY



**2881693**

SYNTHETIC ROPE REQUIRED  
FITS WINCHES: 2880434, 2880432



**NEW**  
**2889253**

SYNTHETIC ROPE REQUIRED  
FITS WINCHES: 2884832, 2884833, 2889469, 2889470



**TOP SELLER**  
ADD SYNTHETIC ROPE  
**2878888**



### ADD WIRELESS WINCH REMOTE

**2879316**

**1588 kg**  
with Synthetic Rope

**TOP SELLER**  
**2884834**

**NEW**  
**2889471**

**2883580**

**1588 kg**  
with Synthetic Rope

**TOP SELLER**  
**2884833**

**TOP SELLER**  
**2880434**

**NEW**  
**2889470**

**1134 kg**  
with Steel Cable

**TOP SELLER**  
**2884832**

**TOP SELLER**  
**2880432**

**NEW**  
**2889469**



## COMFORT ESSENTIALS



Polaris Pro HD 1,588 kg Winch	P. 14	LED Light Kit	P. 16	Pro Armor Wheel & Tyre Set: Dual Threat/4202	P. 45
Trail Brushguard	P. 14	Rear Power Harness	P. 16	Lug Nuts	P. 45
Rear Brushguard	P. 14	<b>LOCK &amp; RIDE</b> Rear Audio Storage Box	P. 17	RIGID D-Series Pro Driving LED Light	P. 46
Rear Rack Extender	P. 15	Audio Storage Box Remote	P. 17	Lightbar Harness	P. 47
Handguards	P. 16	<b>NEW</b> Pod Bag	P. 17	LED Y-Harness	P. 47
Handguard Mount	P. 16	<b>NEW</b> Fender Bag	P. 17		

## HUNTER



Polaris HD 1,588 kg Winch	P. 14	<b>LOCK &amp; RIDE</b> Tall Windshield	P. 18	Lightbar Harness	P. 47
HD Front Brushguard with Hitch	P. 14	Pro Armor Wheel & Tyre Set: Mud XC/4205	P. 45	Gun Boot L	P. 48
Rear Rack Extender	P. 15	Lug Nuts	P. 45	Stronghold Auto-Latch Mount	P. 48
Hand & Thumb Warmer Kit	P. 16	RIGID SR-Series 25.4 cm Combo LED Light	P. 47	<b>LOCK &amp; RIDE</b> Rhino Grip Pro	P. 48



## WORKER

Polaris HD 1,134 kg Winch	P. 14
Rear Brushguard	P. 14
HD Front Brushguard with Hitch	P. 14
Body Armor	P. 15

Rear Rack Extender	P. 15
Front Utility Rack	P. 15
Rear Utility Rack	P. 15
Rear Power Harness	P. 16

<b>LOCK &amp; RIDE</b> Open Cargo Box	P. 17
<b>LOCK &amp; RIDE</b> Mid Windshield	P. 18
Pro Armor Wheel & Tyre Set: Harvester/4204	P. 45
Lug Nuts	P. 45

## WINTER

Polaris Pro HD 1,588 kg Winch	P. 14
HD Front Brushguard with Hitch	P. 14
Rear Rack Extender	P. 15
Hand & Thumb Warmer Kit	P. 16

<b>LOCK &amp; RIDE</b> Rear Cargo Box	P. 17
<b>LOCK &amp; RIDE</b> Tall Windshield	P. 18
Glacier Integrated Plow Mount	P. 37
Glacier Pro Steel ATV Plow Frame	P. 37

Glacier Pro Plow Blade - 167.6 cm Poly	P. 37
RIGID SR-Series 25.4 cm Combo LED Light	P. 47
Lightbar Harness	P. 47



# 2022 SPORTSMAN 570



## WINCHES

### POLARIS PRO HD 1,588 kg WINCH

TOP SELLER

- Adds 1,588 kg of pulling capacity with Auto Stop Technology for plowing applications
- Rapid Rope Recovery recovers open cable 5x as fast as standard mode on other Polaris winches

» 2884834

SPORTSMAN 450/570 '21-22



RAPID ROPE RECOVERY

5x  
FASTER

LEARN MORE ON P. 10

### POLARIS HD 1,588 kg WINCH

TOP SELLER

- Adds 1,588 kg of pulling capacity with quick and easy installation
- Includes all components required for installation plus 15m of .5 cm premium high-strength synthetic rope

» 2884833

SPORTSMAN 450/570 '21-22



### POLARIS HD 1,134 kg WINCH

TOP SELLER

- Adds 1,134 kg of pulling capacity with quick and easy installation
- Includes all components required for installation plus 15m of .5 cm high-strength steel cable

» 2884832

SPORTSMAN 450/570 '21-22



## PROTECTION

### TRAIL BRUSHGUARD

TOP SELLER

- Provides enhanced protection from brush and debris
- Has designated light bar holes and is compatible with winch and Body Armor

» 2884844

SPORTSMAN 450/570 '21-22



### REAR BRUSHGUARD

TOP SELLER

- Protect your vehicle from brush, sticks, rocks and light bumps into solid objects
- Made of sturdy 3.2 cm steel tube with a matte black finish

» 2884847

SPORTSMAN 450/570 '21-22



### HD FRONT BRUSHGUARD WITH HITCH

- Adds heavy-duty protection with a custom look
- Has designated light bar holes and is compatible with winch and Body Armor
- Standard front receiver hitch for additional functionality

» 2884850

SPORTSMAN 450/570 '21-22



NEED A PLOW? SEE P. 36





## RACKS



### BODY ARMOR

- Provides extra protection to your ATV's full body and fenders

» 2884851

SPORTSMAN 450/570 '21-22

Front bumper (2884850 or 2884844) required for installation



### SKID PLATE

- Built to be tough from 10mm thick high-density polyethylene

» 2884852

SPORTSMAN 450/570 '21-22



### REAR RACK EXTENDER

TOP SELLER

- Forms a 7.6 cm tall perimeter around the rear cargo rack to keep gear secure which maximises your cargo capabilities
- Durable steel construction provides a sturdy tie down anchor for loose gear
- Compatible with Cargo Boxes and Rear Utility Rack

» 2884841

SPORTSMAN 450/570 '21-22



### FRONT UTILITY RACK

TOP SELLER

- Tubular steel rack that attaches on top of front plastic rack providing protection and multiple tie down points
- 1.9 cm diameter matte black steel tube

» 2884842

SPORTSMAN 450/570 '21-22



### REAR UTILITY RACK

TOP SELLER

- Replaces rear plastic rack with a strong flat steel rack with integrated tie down points
- Works with all Lock & Ride accessories, rack extenders, and gun mounts

» 2884843

SPORTSMAN 450/570 '21-22



# 2022 SPORTSMAN 570

## COMFORT



### HANDGUARDS

<input type="checkbox"/> BRIGHT WHITE	2876883
<input checked="" type="checkbox"/> BLACK <small>TOP SELLER</small>	2876846
<input type="checkbox"/> INDY RED	2876845

- Handguard Mount (2889341) is required when installing Polaris Handguards
- Does not fit with windshields or Handlebar Mounted Mirrors



» 2889341 • MOUNT

SPORTSMAN 450/570 '21-22



### HAND & THUMB WARMER KIT TOP SELLER

- Provides heat to grips and throttle and is easily installed by plugging into pod
- Includes two heated grips and one throttle warmer

» 2885002

SPORTSMAN 450/570 '21-22



### LED LIGHT KIT

- Upgrade your standard headlights and pod lights to LEDs with this upgrade kit

» 2884859

SPORTSMAN 450/570 '21-22



### HANDLEBAR MOUNTED MIRRORS TOP SELLER

- Enhances visibility of what's behind you for added safety
- Sold as a pair
- Does not fit with windshields or Handguards

» 2877222

SPORTSMAN 450/570 '21-22

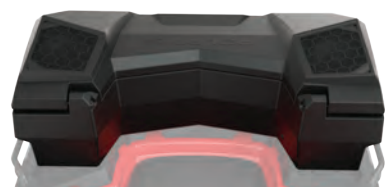


### REAR POWER HARNESS

- Provides power to the rear of the ATV for electrical accessories including Rear Audio Storage Box

» 2889070

SPORTSMAN 450/570 '21-22



#### LOCK & RIDE REAR AUDIO STORAGE BOX

- Dual 15.2 cm speakers by Rockford Fosgate that connect via Bluetooth
- Mounts easily with Lock & Ride to the rear rack and is compatible with rack extenders, utility rack, and gun mount
- Rest easy knowing that your speakers are protected with a sealed-lid container
- Rear Power Harness required for installation (2889070)

» 2884856

SPORTSMAN 450/570 '21-22



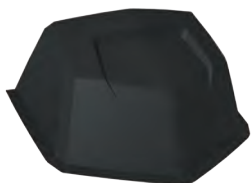
#### AUDIO STORAGE BOX REMOTE

- Easily control the volume or switch to the next song on your Rear Audio Storage Box
- Conveniently mounts to your ATV's handlebars

» 2884987

SPORTSMAN 450/570 '21-22

# STORAGE



#### POD BAG

- Keep your essentials in reach with 2 Litres of storage capacity
- Mounts to the top of the light pod with HD Velcro
- Semi-rigid construction and PU Laminated EVA material keeps belongings protected from the elements
- Compatible with windshields

» 2889286

SPORTSMAN 450/570 '21-22



#### FENDER BAG

- Provides easy-access 8.3 Litres of storage
- Mounts to the front left fender with HD Velcro
- Semi-rigid construction and PU Laminated EVA material keeps belongings protected from the elements

» 2889287

SPORTSMAN 450/570 '21-22



#### REAR RACK EXTENDER BAGS

- Three bags included (Rear Rack Extender sold separately)
- Mounts to Rear Rack Extender with HD Velcro
- Add a convenient 1 Litre of storage without sacrificing the rear rack
- Made to withstand the elements and wear with durable ballistic nylon construction (1680 Nylon and 600D SPD)
- Rear Rack Extender (2884841) is required

» 2889411

SPORTSMAN 450/570 '21-22



#### UNDERSEAT BAG

- Provides an extra 8.3 Litres of storage capacity
- Mounts directly under your seat via a Velcro wrap
- Durable semi-rigid construction keeps items protected

» 2889454

SPORTSMAN 450/570 '21-22



#### LOCK & RIDE REAR CARGO BOX

- Increase your storage with an extra 80.4 litres of dry, dust-proof storage
- Mounts easily with Lock & Ride to the rear rack and is compatible with rack extenders, utility rack, and gun mount

- Includes 2 padlock locations

» 2884853

SPORTSMAN 450/570 '21-22



#### LOCK & RIDE OPEN CARGO BOX

- Increase your storage with an extra 83.3 litres of convenient storage space

- Mounts easily with Lock & Ride to the rear rack and is compatible with rack extenders, utility rack, and gun mount

- Holds two 18.9-litre buckets with integrated grab handle to make it easy to carry and transport cargo

- 12 convenient tie-down locations to secure cargo

» 2884854

SPORTSMAN 450/570 '21-22



#### LOCK & RIDE REAR COOLER BOX

- Increase your storage with an extra 46 quarts of weather resistant cooler storage

- Mounts easily with Lock & Ride to the rear rack and is compatible with rack extenders, utility rack, and gun mount

- Integrated bottle opener and 2 padlock locations

» 2884857

SPORTSMAN 450/570 '21-22





# 2022 SPORTSMAN 570



## WINDSHIELDS



**NEW**  
Tall 48.9 cm Clear



Tall 48.9 cm Clear



Mid 39.4 cm Clear



Short 24.1 cm Clear

### LOCK & RIDE WINDSHIELDS

- Lock & Ride technology allows for easy installation and removal in seconds without tools
- Poly windshields are flexible, impact-resistant, and provide long-term value over the life of your machine
- Three heights available for whatever coverage you prefer
- Does not work with Handguards or Handlebar Mounted Mirrors

SIZE	COLOUR	PART #
TALL 48.9 cm	CLEAR	2884945
MID 39.4 cm	CLEAR	2884845
SHORT 24.1 cm	CLEAR	2884946

SPORTSMAN 450/570 '21-22

### **NEW** FALL AVAILABILITY

TALL 48.9 cm	CLEAR	2889491
--------------	-------	---------

SPORTSMAN 450/570 '22 WITH 7" DISPLAY INSTALLED







# DO MORE

## PLOWS P. 36



## WHEELS & TYRES P. 40



## LIGHTING P. 46





# SPORTSMAN

2014-2021

570<sub>x2</sub>

2014-2022

570<sub>6X6</sub>

570<sub>TOURING</sub>



## WINCHES

### POLARIS HD

1,588 kg WINCH TOP SELLER

» 2880434

X2 570 '15-21, TOURING 570 '14-22, 6X6 570 '17-22



### POLARIS HD

1,134 kg WINCH TOP SELLER

» 2880432

X2 570 '15-21, TOURING 570 '14-22, 6X6 570 '17-22



## STORAGE



### SEMI-RIGID TOURING CARGO BAG

- Large-capacity, heavy-duty vinyl bag
- Three zippered openings, removable dividers
- Attaches to rack with Velcro straps

» 2877220

TOURING 570 '14-22

NEED A PLOW? SEE P. 36





### HAND WARMERS TOP SELLER

» 2877363

X2 570 '15-21, TOURING 570 '14-22, 6X6 570 '17-22

### HANDGUARDS

<input type="checkbox"/>	<b>BRIGHT WHITE</b>	2876883
<input checked="" type="checkbox"/>	<b>BLACK</b> <small>TOP SELLER</small>	2876846
<input type="checkbox"/>	<b>INDY RED</b>	2876845

- Handguard Mount (2889341) is required when installing Polaris Handguards
- Does not fit with windshields or Handlebar Mounted Mirrors

**NEW**

» 2889341 • MOUNT

X2 570 '15-21, TOURING 570 '14-22, 6X6 570 '17-22



### THROTTLE/THUMB WARMER TOP SELLER

» 2877364

X2 570 '15-21, TOURING 570 '14-22, 6X6 570 '17-22



### HANDLEBAR MOUNTED MIRRORS TOP SELLER

- Enhances visibility of what's behind you for added safety
- Sold as a pair
- Does not fit with Windshield Fairing or Handguards

» 2877222

X2 570 '15-21, TOURING '570 14-22, 6X6 570 '17-22

## PROTECTION, RACKS & WINDSHIELDS



### FRONT BRUSHGUARD TOP SELLER

» 2879714

X2 570 '15-21, TOURING 570 '14-22, 6X6 570 '17-22



### REAR BRUSHGUARD

» 2879715

TOURING 570 '14-22



### ULTIMATE SERIES FRONT RACK EXTENDER 10.2 CM

» 2879716

X2 570 '15-21, TOURING 570 '14-22, 6X6 570 '17-22



### LOCK & RIDE YUKON ADVENTURE RACK

- Adds increased storage volume by allowing you to increase storage height securely

» 2882084

6X6 570 '17-22

### LOCK & RIDE WINDSHIELDS

- Lock & Ride technology allows for easy installation and removal in seconds without tools
- Poly windshields are flexible, impact-resistant, and provide long-term value over the life of your machine
- Does not work with Handguards

SIZE	COLOUR	PART #
<b>TALL 48.9 cm</b>	CLEAR	2880539-409
<b>MID 39.4 cm</b>	SMOKE	2880540-412

X2 570 '18-21, TOURING 570 '18-22



Tall 48.9 cm Clear



Mid 39.4 cm Smoke



# 2014-2020 SPORTSMAN 570

## WINCHES

### POLARIS HD 1,588 kg WINCH

TOP SELLER

» 2880434

450/570 '14-20



### POLARIS HD 1,134 kg WINCH

TOP SELLER

» 2880432

450/570 '14-20



NEED A PLOW? SEE P. 36

## PROTECTION



### FRONT BRUSHGUARD

TOP SELLER

» 2879714

450/570 '14-20



### REAR BRUSHGUARD

» 2879715

450/570 '14-20

## RACKS



### ULTIMATE SERIES FRONT RACK EXTENDER 10.2 CM

» 2879716

450/570 '14-20



### ULTIMATE SERIES REAR RACK EXTENDER 10.2 CM

» 2879717

450/570 '14-20

## STORAGE

### LOCK & RIDE REAR CARGO BOX

- Increase your storage with an extra of capacity
- Store two full-size helmets
- Works with Rack Extenders
- Will not fit when Utility Rack is installed

» 2882882

450/570 '14-20







## COMFORT



### HAND WARMERS TOP SELLER

» 2877363  
450/570 '14-20



### THROTTLE/THUMB WARMER TOP SELLER

» 2877364  
450/570 '14-20



### HANDGUARDS

<input type="checkbox"/> BRIGHT WHITE	2876883
<input checked="" type="checkbox"/> BLACK <small>TOP SELLER</small>	2876846
<input type="checkbox"/> INDY RED	2876845

- Handguard Mount (2889341) is required when installing Polaris Handguards
- Does not fit with windshields or Handlebar Mounted Mirrors

**NEW**  
» 2889341 • MOUNT  
450/570 '14-20



### HANDLEBAR MOUNTED MIRRORS TOP SELLER

- Enhances visibility of what's behind you for added safety
- Sold as a pair
- Does not fit with windshields or Handguards

» 2877222  
450/570 '14-20

## WINDSHIELDS

### LOCK & RIDE WINDSHIELDS

- Lock & Ride technology allows for easy installation and removal in seconds without tools
- Poly windshields are flexible, impact-resistant, and provide long-term value over the life of your machine
- Does not fit with Handguards or Handlebar Mounted Mirrors

SIZE	COLOUR	PART #
TALL 48.9 cm	CLEAR	2880539-409
MID 39.4 cm	SMOKE	2880540-412

450/570 '14-20



Tall 48.9 cm Clear



Mid 39.4 cm Smoke



## COMFORT ESSENTIALS



<b>N/A</b> Polaris Pro HD 1,588 kg Winch	P. 26
Ultimate Series Rear Rack Extender	P. 26
Ultimate Series Front Brushguard	P. 27
Ultimate Series Rear Brushguard	P. 27
<b>N/A</b> Pod Bag	P. 28

<b>LOCK &amp; RIDE</b> Rear Audio Storage Box	P. 29
Audio Storage Box Remote	P. 29
Handguards	P. 29
Handguard Mount	P. 29
Rear Power Harness	P. 29

Pro Armor Wheel & Tyre Set: Dual Threat/4202	P. 45
Lug Nuts	P. 45
RIGID D-Series Pro Driving LED Light	P. 46
Lightbar Harness	P. 47
LED Y-Harness	P. 47

## HUNTER



<b>N/A</b> Polaris HD 1,588 kg Winch	P. 26
Ultimate Series Rear Rack Extender	P. 26
Ultimate Series Front Brushguard	P. 27
Hand & Thumb Warmer Kit	P. 29

<b>LOCK &amp; RIDE</b> Tall Windshield	P. 30
Pro Armor Wheel & Tyre Set: Mud XC/4205	P. 45
Lug Nuts	P. 45
RIGID SR-Series 25.4 cm Combo LED Light	P. 47

Lightbar Harness	P. 47
Gun Boot L	P. 48
Stronghold Auto-Latch Mount	P. 48
<b>LOCK &amp; RIDE</b> Rhino Grip Pro	P. 48



## WORKER



<b>NEW</b> Polaris HD 1,134 kg Winch	P. 26
Ultimate Series Rear Rack Extender	P. 26
Ultimate Series Front Steel Rack	P. 27
Ultimate Series Front Brushguard	P. 27

Ultimate Series Rear Brushguard	P. 27
Ultimate Series Body Armor	P. 27
<b>LOCK &amp; RIDE</b> Open Cargo Box	P. 28
Rear Power Harness	P. 29

<b>LOCK &amp; RIDE</b> Mid Windshield	P. 30
Pro Armor Wheel & Tyre Set: Harvester/4204	P. 45
Lug Nuts	P. 45

## WINTER



<b>NEW</b> Polaris Pro HD 1,588 kg Winch	P. 26
Ultimate Series Rear Rack Extender	P. 26
Ultimate Series Front Brushguard	P. 27
<b>LOCK &amp; RIDE</b> Rear Cargo Box	P. 28

Hand & Thumb Warmer Kit	P. 29
<b>LOCK &amp; RIDE</b> Tall Windshield	P. 30
Glacier Integrated Plow Mount	P. 37
Glacier Pro Steel ATV Plow Frame	P. 37

Glacier Pro Plow Blade - 167.6 cm Poly	P. 37
RIGID SR-Series 25.4 cm Combo LED Light	P. 47
Lightbar Harness	P. 47



# SPORTSMAN XP 1000 XP 1000 S



## WINCHES

### POLARIS PRO HD 1,588 kg WINCH

» 2883580

SPORTSMAN XP 1000 S '20-22



» 2889471

SPORTSMAN 850 '12-22, SPORTSMAN XP 1000 '15-22,  
SPORTSMAN TOURING XP 1000 '15-22,  
SPORTSMAN TOURING 850 '15-22



**RAPID ROPE RECOVERY**



LEARN MORE ON P. 10

» 2889470

### POLARIS HD 1,588 kg WINCH

SPORTSMAN 850 '12-22, SPORTSMAN XP 1000 '15-22,  
SPORTSMAN TOURING XP 1000 '15-22,  
SPORTSMAN TOURING 850 '15-22



» 2889469

### POLARIS HD 1,134 kg WINCH

SPORTSMAN 850 '12-22, SPORTSMAN XP 1000 '15-22,  
SPORTSMAN TOURING XP 1000 '15-22,  
SPORTSMAN TOURING 850 '15-22



**NEED A PLOW? SEE P. 36**

## RACKS

### ULTIMATE SERIES RACK EXTENDER 10.2 cm

#### FRONT

» 2882022

SPORTSMAN XP 1000 S '20-22,  
SPORTSMAN 850/1000 '17-22



#### REAR

» 2882023

SPORTSMAN XP 1000 S '20-22,  
SPORTSMAN 850/1000 '17-22  
Fits with Rear Cargo Box (2882882)



### ULTIMATE SERIES RACK EXTENDER 17.8 CM

#### FRONT

» 2882024

SPORTSMAN XP 1000 S '20-22,  
SPORTSMAN 850/1000 '17-22  
Not shown

#### REAR

» 2882025

SPORTSMAN XP 1000 S '20-22,  
SPORTSMAN 850/1000 '17-22  
Does not fit with Rear Cargo Box (2882882)



#### FRONT RACK EXTENDER

» 2879890

SPORTSMAN 850/1000 TOURING '10-22  
Does not fit with Front Cargo Box (2877951)



## PROTECTION

### ULTIMATE SERIES STEEL RACK

#### FRONT

» 2883257

SPORTSMAN XP 1000 S '20-22,  
SPORTSMAN 850/1000 '17-22

#### REAR

» 2883258

SPORTSMAN XP 1000 S '20-22,  
SPORTSMAN 850/1000 '17-22



FRONT



REAR

### ULTIMATE SERIES MOVEABLE TIE-DOWN POINTS

» 2882270

(FRONT & REAR - SOLD IN PAIRS)  
SPORTSMAN 850/1000 '17-22



### ULTIMATE SERIES BRUSHGUARD

- Quick installation to the integrated mounting tubes on the vehicle using wedge-style expansion anchor mounts
- Attach the Body Armor to the Front Brushguard to provide the ultimate protection for the front fenders

» 2882020 • FRONT **TOP SELLER**

SPORTSMAN XP 1000 S '20-22,  
SPORTSMAN 850/1000 '17-22

» 2882583 • REAR **TOP SELLER**

SPORTSMAN XP 1000 S '20-22,  
SPORTSMAN 850/1000 '17-22



### ULTIMATE SERIES BODY ARMOR

- Securely mounts to Ultimate Series SPORTSMAN XP Front Brushguard (2882020)

- Comes as pair

» 2882090

SPORTSMAN 850/1000 '17-22



### TOURING XP BRUSHGUARD

- Adds heavy-duty protection and a custom look

» 2878709 • FRONT

SPORTSMAN 850/1000 TOURING '10-22

» 2878324 • REAR

SPORTSMAN 850/1000 TOURING '10-22



# SPORTSMAN XP 1000 XP 1000 S



## STORAGE



### LOCK & RIDE REAR CARGO BOX

- Increase your storage with an extra 80.4 litres of dry, dust-proof storage
- Mounts easily with Lock & Ride to the rear rack and is compatible with rack extenders and gun mount
- Includes 2 padlock locations
- Will not fit when Ultimate Series Steel Rack is installed

» 2884853

SPORTSMAN XP 1000 S '20-22, SPORTSMAN 850/1000 '17-22



### LOCK & RIDE OPEN CARGO BOX

- Increase your storage with an extra 83.3 litres of convenient storage space
- Mounts easily with Lock & Ride to the rear rack and is compatible with rack extenders and gun mount
- Holds 2, 18.9-litre buckets with integrated grab handle to make it easy to carry and transport cargo
- 12 convenient tie-down locations to secure cargo
- Includes 2 padlock locations
- Will not fit when Ultimate Series Steel Rack is installed

» 2884854

SPORTSMAN XP 1000 S '20-22, SPORTSMAN 850/1000 '17-22



### LOCK & RIDE REAR COOLER BOX

- Increase your storage with an extra 46 quarts of weather-resistant cooler storage space
- Mounts easily with Lock & Ride to the rear rack and is compatible with rack extenders and gun mount
- Integrated bottle opener and 2 padlock locations
- Will not fit with Ultimate Series Steel Rack

» 2884857

SPORTSMAN XP 1000 S '20-22, SPORTSMAN 850/1000 '17-22

### NEW POD BAG

- Keep your essentials in reach with 2 Litres of storage capacity
- Mounts to the top of the light pod with HD Velcro
- Semi-rigid construction and PU Laminated EVA material keeps belongings protected from the elements
- Compatible with windshields

» 2889286

SPORTSMAN 850/1000 21-22



### ULTIMATE SERIES READY PACK

- Keep your trail essentials at the ready with this easy-to-access, weather-resistant storage compartment

» 2882271

SPORTSMAN 850/1000 '17-22



### LOCK & RIDE FRONT CARGO BOX

» 2877951

SPORTSMAN 850/1000 TOURING '10-22

Front Rack Extender cannot be installed at the same time as the Front Cargo Box



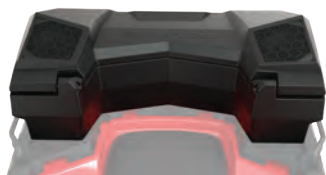
### LOCK & RIDE REAR STORAGE BOX

» 2878000

SPORTSMAN 850/1000 TOURING '10-22

Slight interference with SPORTSMAN Touring 550/850 '11-14 passenger handles





## LOCK & RIDE REAR AUDIO STORAGE BOX

- Dual 15.2 cm speakers by Rockford Fosgate that connect via Bluetooth
- Mounts easily with Lock & Ride to the rear rack and is compatible with rack extenders and gun mount
- Rest easy knowing that your speakers are protected with a sealed-lid container
- Rear Power Harness (2889071) is required

» 2884856

SPORTSMAN XP 1000 S '20-22, SPORTSMAN 850/1000 '17-22



## AUDIO STORAGE BOX REMOTE

- Easily control the volume or switch to the next song on your Rear Audio Storage Box
- Conveniently mounts to your ATV's handlebars

» 2884987

SPORTSMAN XP 1000 S '20-22, SPORTSMAN 850/1000 '17-22

# COMFORT



## HANDLEBAR MOUNTED MIRRORS TOP SELLER

- Enhances visibility of what's behind you for added safety
- Sold as a pair
- Does not fit with Windshield Fairing or Handguards

» 2877222

SPORTSMAN XP 1000 S '20-22, SPORTSMAN 850/1000 TOURING '10-22, SPORTSMAN 850/1000 '09-22,



## HAND & THUMB WARMER KIT TOP SELLER

- Provides heat to grips and throttle and is easily installed by plugging into pod
- Includes two heated grips and one throttle warmer

» 2885002

SPORTSMAN XP 1000 '20-22



## HAND WARMERS TOP SELLER

» 2877363

SPORTSMAN XP 1000 S '20, SPORTSMAN XP 1000 '15-20, SPORTSMAN 850 '15-20, SPORTSMAN TOURING XP 1000 '15-22, SPORTSMAN TOURING 850 '15-22



## HANDGUARDS

<input type="checkbox"/>	BRIGHT WHITE	2876883
<input checked="" type="checkbox"/>	BLACK <span>TOP SELLER</span>	2876846
<input type="checkbox"/>	INDY RED	2876845

- Handguard Mount (2889341) is required when installing Polaris Handguards
- Does not fit with windshield or Handlebar Mounted Mirrors

**NEW**

» 2889341 • MOUNT

SPORTSMAN XP 1000 S '20-22, SPORTSMAN 850/1000 TOURING '10-22, SPORTSMAN 850/1000 '09-22,



## THROTTLE/THUMB WARMERS TOP SELLER

» 2877364

SPORTSMAN XP 1000 S '20, SPORTSMAN XP 1000 '15-20, SPORTSMAN 850 '15-20, SPORTSMAN TOURING XP 1000 '15-22, SPORTSMAN TOURING 850 '15-22



**NEW**

## REAR POWER HARNESS

- Provides power to the rear of the ATV for electrical accessories including Rear Audio Storage Box

» 2889071

SPORTSMAN XP 1000 S '20-22, SPORTSMAN XP 1000 '17-22, SPORTSMAN 850 '17-22





# SPORTSMAN XP 1000 XP 1000 S



## WINDSHIELDS

### LOCK & RIDE WINDSHIELDS

- Provides enhanced protection from the elements and off-road hazards
- Easily installs and removes without tools utilizing Lock & Ride technology
- Improved mounting system for easier and quicker attachment and detachment

SIZE	COLOUR	PART #
TALL 48.9 cm	CLEAR	2884945
MID 39.4 cm	CLEAR	2884845
SHORT 24.1 cm	CLEAR	2884946

SPORTSMAN XP 1000 S '21-22, SPORTSMAN XP 1000 '21-22,  
SPORTSMAN 850 '21-22



Tall 48.9 cm Clear



Mid 39.4 cm Clear



Short 24.1 cm Clear

### LOCK & RIDE WINDSHIELDS

- Installs and removes in seconds without tools with Lock & Ride technology
- Poly windshields are flexible, impact-resistant, and provide long-term value over the life of your machine
- Does not work with Handguards

SIZE	COLOUR	PART #
TALL 48.9 cm	CLEAR	2880539-409
MID 39.4 cm	SMOKE	2880540-412

SPORTSMAN TOURING XP 1000 '15-22, SPORTSMAN TOURING 850 '15-22



Tall 48.9 cm Clear



Mid 39.4 cm Smoke



# DO MORE

## LOCK & RIDE ULTIMATE SERIES WINDSHIELD FAIRING

- Customizable system based on your style and protection needs
- Install the fairing to add one of the Ultimate Series Windshields below
- Does not work with Handguards or Handlebar Mounted Mirrors

» 2882512

SPORTSMAN XP 1000 S '20, SPORTSMAN XP 1000 '17-20, SPORTSMAN 850 '17-20



## ULTIMATE SERIES WINDSHIELDS

- Fairing required to add your preferred windshield

SIZE	PART #
TALL 50.8 CM	2882152
MID 40.6 CM	2882151

SPORTSMAN XP 1000 S '20, SPORTSMAN XP 1000 '17-20, SPORTSMAN 850 '17-20



Our fairing system allows for changing out the windshield quickly and easily. Simply remove the six dart-type fasteners and swap out the windshield.

## PLOWS

P. 36



## WHEELS & TYRES

P. 40



## LIGHTING

P. 46



## HUNT

P. 48





# SCRAMBLER XP 1000 S



## WINCHES

### POLARIS PRO HD 1,588 kg WINCH

» 2883580

SCRAMBLER XP 1000 S '20-21



### NEW » 2889471

SCRAMBLER 850 '14-22,  
SCRAMBLER XP 1000 '14-18



### NEW POLARIS HD 1,588 kg WINCH

» 2889470

SCRAMBLER 850 '14-22, SCRAMBLER XP 1000 '14-18



### NEW POLARIS HD 1,134 kg WINCH

» 2889469

SCRAMBLER 850 '14-22, SCRAMBLER XP 1000 '14-18



## RACKS/STORAGE



### LARGE REAR RACK

» 2879139

SCRAMBLER XP 1000 S '20-21, SCRAMBLER XP 1000 '14-18,  
SCRAMBLER 850 '14-22  
Not compatible with Ogio Bag (2879925)



### OGIO BAG

» 2879925

SCRAMBLER XP 1000 S '20-21, SCRAMBLER XP 1000 '14-18,  
SCRAMBLER 850 '14-22

## PROTECTION



### ULTIMATE SPORT SERIES FRONT BRUSHGUARD

» 2883595

SCRAMBLER XP 1000 S '20-21



### FRONT BRUSHGUARD

» 2879136

SCRAMBLER 850 '14-22, SCRAMBLER XP 1000 '14-18  
Replaces existing lower bumper – will not work together



# MISCELLANEOUS ACCESSORIES



## BOOM SPRAYER

» 2882266

ALL SPORTSMAN MODELS EXCEPT TOURING



## ATV LICENCE PLATE

• Includes numbers and letters

» 2873270



## QUICKTAP BATTERY POSTS

- Easy-to-access terminal posts give you quick access to the battery power
- Ideal for charging your battery, powering a temporary accessory, or when you need to offer an unexpected jump-start
- Connection posts feature covers to protect terminals when not in use

» 2882110



## RIDE & REPAIR ESSENTIALS KIT

- 12-volt DC portable air compressor
- Tyre repair kit with 6 plugs
- Basic first-aid kit with bandages, scissors, safety pins, and more
- 12-volt jumper cables
- Duct tape - 300mm x 1 roll
- Zip ties - 150mm length
- Electrical tape
- Ratchet strap - 50mm
- Microfibre cloth
- Carry bag

» 2881207



# YOUTH ATV OUTLAW 70 EFI

THE PERFECT FIRST ALL-TERRAIN VEHICLE FOR  
KIDS STARTING AT 6 YEARS AND OLDER.





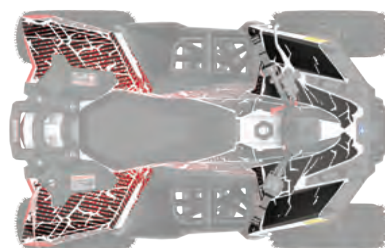


### FRONT BRUSHGUARD

- Provides enhanced protection from brush and other debris on the trail

» 2884567

OUTLAW 70 EFI '21-22



### DECAL KIT - INDY RED

- Replaces the stock Outlaw 70 decals to provide a unique and custom look for your youth ATV

» 2885107

OUTLAW 70 EFI '21-22

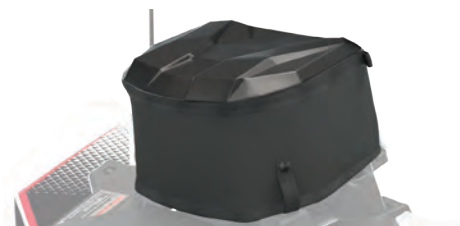


### REAR BRUSHGUARD

- Protect the rear of your youth ATV from hazards on the trails

» 2884778

OUTLAW 70 EFI '21-22



### REAR STORAGE BAG

- Convenient storage that easily connects to the rear rack

» 2884555

OUTLAW 70 EFI '21-22



### WINDSHIELD - POLY

- Added wind and hand protection with a durable poly design

» 2885005

OUTLAW 70 EFI '21-22





# PLOW SYSTEM

**TAKE COMMAND OF  
CLEARING SNOW AND  
MAKE QUICK WORK OF  
EVEN THE HEAVIEST JOBS.**



## THE POLARIS ENGINEERED ADVANTAGE

### INSTALLATION

30 seconds: Drive up, clip in, lock down, and go – the integrated Polaris Engineered Glacier Plow System simplifies plowing.



### CONVENIENCE

Lift and angle adjustments can be made from the driver's seat.

**ANGLE YOUR BLADE  
RIGHT FROM YOUR SEAT  
WITH THE GLACIERPRO  
PLOW HYDRAULIC  
ANGLE SYSTEM**



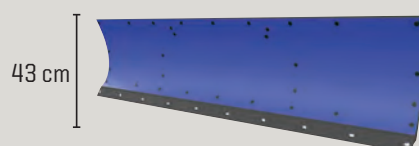
### ROBUST FRAME

A plow system is only as strong as its frame, and Polaris Engineered plow frames have a wide frame to withstand the rigors of heavy plowing.



### DURABLE BLADES

Available in strong stamped steel or corrosion-resistant poly materials, Polaris Engineered plow blades cover a large surface area for quick snow removal.



**168 cm POLY BLADE**



**152 cm & 132 cm STEEL BLADE**



## COMMON

WINCHES

## **NEW** GLACIER PRO HD PLOW SYSTEM

**System includes:**

- Mount (2881423)
- Frame (2879630)
- 152.4 cm Steel Plow (2879638)

» 3880013

- Hydraulic Controller (2880836)
- Plow Markers (2872726)
- Plow Deflector (2879866)

» **3880012**

XP 1000 '15-22, 850 '15-22, TOURING 1000 '15-22,  
TOURING 850 '15-22, SCRAMBLER 850 '15-22

**REQUIRES LIFT METHOD:  
SEE WINCHES BELOW**

**REQUIRES LIFT METHOD: SEE WINCHES BELOW**



## 25°

### LEFT AND RIGHT

Change the angle of the plow blade with the Power Controller

## HYDRAULIC CONTROL FOR EXTREME SNOW REMOVAL

**NEED TRACKS?  
SEE P. 38**

» **Ability to add a hydraulic angle system**

SCRAMBLER XP1000 S

MISC &amp; YOUTH

## WHEELS & TYRES

## LIGHTING

HUNT &amp; COOLERS

### SELECT ACCESSORIES AND REPLACEMENT ITEMS

**Plow Winch Rope** For 1,134 kg & 1,588 kg winches | 2878483  
**Glacier Plow Marker** Sold in pairs | 2872726  
**Rear Tyre Chains** Recommended for rear tyres only | 2881422  
**Plow Blade Track Extension** Required for track equipped vehicles | 2879719

37



# ALL-TERRAIN TRACTION

It's tough to make SPORTSMAN even more versatile than it already is. But with a set of Prospector Pro Tracks, you'll do just that. Tread through deep snow without concern.

Polaris-specific gearing provides 1:1 ratio to:

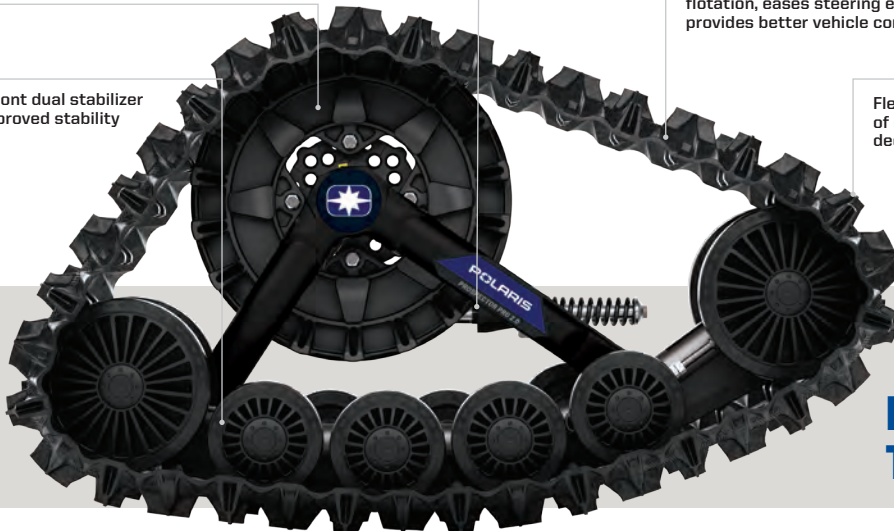
- Minimize track slip, providing better climbing ability and improved traction in deep snow
- Improve top speed over prior models by approximately 5%
- Reduce operating RPM for a quieter ride
- Improve driveline durability, which allows vehicle to run at a lower RPM, decreasing engine wear

Polaris exclusive optimized hub geometry that minimizes feedback and eases steering effort

Lightweight design provides for better flotation, eases steering effort, and provides better vehicle control

New front dual stabilizer for improved stability

Flexible lug design provides the highest level of deep snow performance by lifting up in deep snow as opposed to digging down



## PROSPECTOR PRO 2.0 TRACK SYSTEM

STEP 1: SELECT A MOUNT KIT		
MODELS	A-ARMS	MOUNT KIT
SPORTSMAN XP 1000/850 ('15-22) SPORTSMAN TOURING XP 1000/850 ('15-22)	STRAIGHT	2879457
SPORTSMAN XP 1000/850 ('16-22) HIGHLIFTER 1000/850 ('16-22)	ARCHED	2882109
SPORTSMAN XP 1000 S ('20-22) SCRAMBLER XP 1000 S ('20-21)	ARCHED	2883977
SPORTSMAN 570 ('21-22)	ARCHED	2889218
SPORTSMAN 570 ('21-22)	STRAIGHT	2889219
SPORTSMAN 570 ('15-22) SPORTSMAN TOURING 570 ('15-22) SPORTSMAN X2 570 ('15-21)	STRAIGHT	2879497

STEP 2: SELECT A TRACK KIT		
MODELS	EPS	TRACK KIT
SPORTSMAN 570 ('15-22) SPORTSMAN TOURING 570 ('15-22) SPORTSMAN X2 570 ('15-21)	YES	2889493
SPORTSMAN XP 1000/850 ('15-22) SPORTSMAN TOURING XP 1000/850 ('17-22) HIGHLIFTER 1000 ('16-22) SPORTSMAN XP 1000 S ('20-22) SCRAMBLER XP 1000 S ('20-21)	YES	2889495
SPORTSMAN 570 ('14-22) SPORTSMAN TOURING 570 ('15-22)	NO	2889492
SPORTSMAN XP 1000 ('18-22) SPORTSMAN 850 ('15-22) SCRAMBLER 850 ('13-22)	NO	2889494

TRACK AND MOUNT KIT		
MODELS	EPS	TRACK AND MOUNT KIT
SPORTSMAN 570 6X6 ('17-22)	YES	2882169

## WANT TO PLOW?

### GLACIER PRO PLOW TRACK EXTENSION

- Plow extension for use when using the Prospector Pro Track System and GlacierPro SPORTSMAN plow system


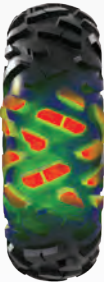



» 2879719

FOR USE WITH GLACIER PRO PLOW SYSTEMS





# SPORTSMAN SNOW TRACTION OPTIONS

TREAD THROUGH SNOW WITH THESE OPTIONS	CONTACT PATCH	TURNING RADIUS
 <p><b>STOCK TYRES</b></p>	<p><b>GOOD</b></p> 	<p><b>354.3 cm</b></p> 
 <p><b>PRO ARMOR WHITEOUT</b></p>	<p><b>BETTER</b></p>  <p>MORE SURFACE AREA FOR BETTER FLOTATION ON SNOW</p>	<p><b>352.743 cm</b></p> 
 <p><b>NEW</b> <b>PROSPECTOR PRO 2.0 TRACKS</b></p>	<p><b>BEST</b></p>  <p>LESS AGGRESSIVE TREAD DISPLACES SNOW FOR BETTER HANDLING</p>	<p><b>445.453 cm</b></p> 



## KNOW YOUR TERRAIN



- Tread patterns optimized for extreme traction
- Ideal for both hard pack and loose trail



- Flexible "grippy" tread
- Aggressive side bite



- Provides traction and durability
- Built to perform in hard sand, jagged rocks or any other extreme terrain

# SUPERIOR PERFORMANCE & DURABILITY



**PRO ARMOR**

## LIFELONG PERFORMANCE

- Every tyre is designed and constructed with longevity in mind
- 3,000+ mile rated (4,828 kilometers)

## PREMIUM PROTECTION

- Pro Armor makes tyres with extra protection exactly where it's needed most – the sidewall
- Triple-belted sidewalls keep your tyres more resistant so you can keep going

## TOUGH TYRES

- Higher ply ratings mean added protection
- Pro Armor builds 8 or 10-ply rated tyres for higher puncture-resistance



## KNOW YOUR TYRES

### DIMENSIONS

TYRE HEIGHT    TYRE WIDTH    WHEEL DIAMETER

**32" x 9" R15**  
Part Number

FRONT/  
REAR

TREAD  
DEPTH

**30mm**

TYRE  
WEIGHT

**18 kg**

PLY  
RATING

**10**

SIDEWALL  
BELTS

**3**

LOAD  
RATING

**499 kg**

**USAGE**  
Where can you use the tyre

**TREAD DEPTH**  
Deeper treads have more grip in all conditions

**TYRE WEIGHT**  
A lighter tyre makes for improved vehicle performance

**PLY RATING**  
Indicates tyre puncture-resistance

**SIDEWALL BELTS**  
Increase your resistance to sidewall punctures

**LOAD RATING**  
How much weight can the tyre handle





- Extra deep treads
- Self-cleaning lugs



- Paddles provide traction and durability in soft sand
- Built to float on top of sand



- Triple-belted sidewalls to resist puncture
- Purpose-built, long lasting tread patterns



- Handles extreme cold
- Holds shape and provides traction

# WAYS TO SHOP

## WHEELS & TYRES

### TYRES BY SIZE

26"	27"
ATTACK	MUD XC
DUAL-THREAT	PRESERVE
HARVESTER	HARVESTER
PRESERVE	WHITEOUT
XD-K	

### TYRES BY TERRAIN

TRAIL	ROCK	DESERT	MUD	UTILITY	SNOW
DUAL-THREAT	DUAL-THREAT	DUAL-THREAT	MUD XC	ATTACK	ATTACK
ATTACK	ATTACK	ATTACK		HARVESTER	HARVESTER
HARVESTER				PRESERVE	PRESERVE
PRESERVE				XD-K	XD-K
XD-K					WHITEOUT
MUD XC					

## TYRES



FRONT/REAR

### PRO ARMOR DUAL-THREAT

- Dual-compound technology and radial construction offer performance in all terrains
- Softer durometer rubber on outer edge for overall superior grip and feel
- Harder durometer rubber in the middle for increase traction during acceleration and longer tread life

		TREAD DEPTH	TYRE WEIGHT	PLY RATING	SIDEWALL BELTS	LOAD RATING
14"	26" x 9" R14 5416340	FRONT	12 kg	10	3	413 kg
14"	26" x 11" R14 5416341	REAR	14 kg			504 kg



WHEEL SIZE

14"



FRONT/REAR

### PRO ARMOR ATTACK

- The best all-purpose tyre for all-season traction in any terrain
- Unique full-face tread design
- Harder durometer lugs promote extended wear, increasing tyre life

		TREAD DEPTH	TYRE WEIGHT	PLY RATING	SIDEWALL BELTS	LOAD RATING
14"	26" x 9" R14 5415613	FRONT	13 kg	8	3	413 kg
14"	26" x 11" R14 5415614	REAR	15 kg			599 kg



WHEEL SIZE

14"

For off-road use only. Please check fitment with your dealer.

COMMON

WINCHES

570

XP 10000 - XP 1000 S

SCRAMBLER XP 1000 S

MISC & YOUTH

PLOW & TRACKS

WHEELS & TYRES

LIGHTING

HUNT & COOLERS



# TYRES



FRONT/REAR

## PRO ARMOR HARVESTER

- All-around workhorse with tread life of 8,047 kilometers
- Tread pattern designed to withstand anything from the farmyard to the pastures to the trail
- With 10-ply, it can carry the load day-in and day-out

			TREAD DEPTH	TYRE WEIGHT	PLY RATING	SIDEWALL BELTS	LOAD RATING
12"	<b>26" x 8" R12</b> 5416396	FRONT	16 mm	11 kg	10	3	388 kg
12"	<b>26" x 10" R12</b> 5415966	REAR		15 kg			615 kg
14"	<b>27" x 10" R14</b> 5415965	FRONT/ REAR		15 kg			599 kg



WHEEL SIZE



FRONT/REAR

## PRO ARMOR PRESERVE

- Turf-friendly for areas where low impact from tyre tread is needed
- Exceptionally quiet-running and low impact

			TREAD DEPTH	TYRE WEIGHT	PLY RATING	SIDEWALL BELTS	LOAD RATING
12"	<b>26" x 8" R12</b> 5416403	FRONT	16 mm	11 kg	10	3	388 kg
12"	<b>26" x 10" R12</b> 5416402	REAR		13 kg			599 kg
14"	<b>27" x 10" R14</b> 5416348	FRONT/ REAR		13 kg			599 kg



WHEEL SIZE



FRONT/REAR

## PRO ARMOR XD-K

- 26" Aramid fibre-belted tyre can tackle any terrain
- Unique full-face tread design
- Harder durometer lugs promote extended wear, increasing tyre life

			TREAD DEPTH	TYRE WEIGHT	PLY RATING	SIDEWALL BELTS	LOAD RATING
12"	<b>26" x 9" R12</b> 5415756	FRONT	31.7 mm	13 kg	8	3/1 Aramid	388 kg
12"	<b>26" x 11" R12</b> 5415757	REAR		15 kg			499 kg



WHEEL SIZE







FRONT/REAR

## PRO ARMOR WHITEOUT

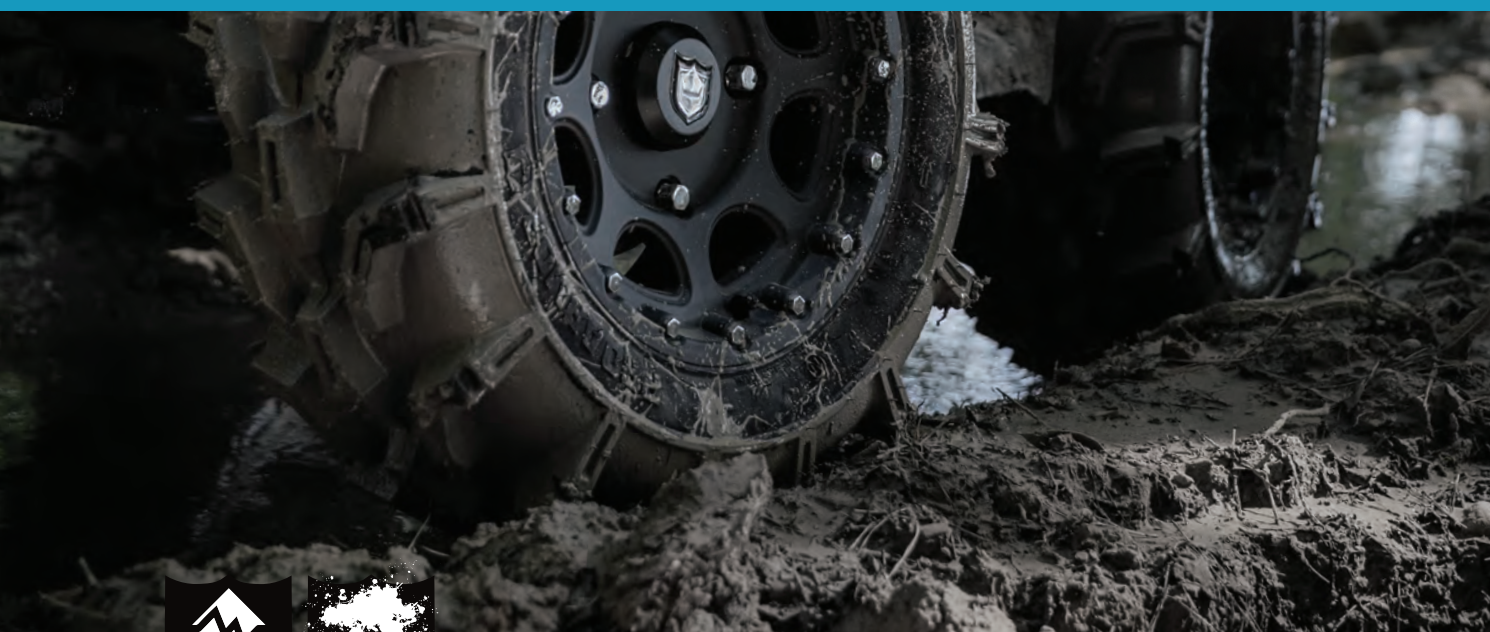
- Extra wide tyres for flotation in snow
- Tread pattern designed for superior snow traction with limited digging

			TREAD DEPTH	TYRE WEIGHT	PLY RATING	SIDEWALL BELTS	LOAD RATING
14"	<b>27" x 14" R14</b> 5416032	FRONT/ REAR	<b>16 mm</b>	<b>11 kg</b>	<b>8</b>	<b>3</b>	<b>424 kg</b>



WHEEL SIZE

14"



FRONT/REAR

## PRO ARMOR MUD XC

- Designed as the perfect mud-trail crossover for a smooth ride on the trail and aggressive traction in the mud
- Dual-compound technology with harder durometer lugs promotes extended wear, increasing tyre life
- 10-ply construction means added protection in the toughest terrain

			TREAD DEPTH	TYRE WEIGHT	PLY RATING	SIDEWALL BELTS	LOAD RATING
14"	<b>27" x 9" R14</b> 5416947	FRONT	<b>30 mm</b>	<b>14 kg</b>	<b>10</b>	<b>3</b>	<b>531 kg</b>
14"	<b>27" x 11" R14</b> 5416948	REAR		<b>15 kg</b>			<b>599 kg</b>



WHEEL SIZE

14"



# WHEELS



40-SERIES

14"

## A 4101

WEIGHT: 6.6 kg | LOAD RATING: 363 kg | OFFSET: -35

MATTE BLACK: FRONT/REAR 14" x 10" 1522958

## B 4201

FRONT WEIGHT: 5.9 kg | LOAD RATING: 408 kg | OFFSET: +4  
REAR WEIGHT: 6.4 kg | LOAD RATING: 590 kg | OFFSET: -9

ACCENT: FRONT 14" x 7" 1522956-266  
REAR 14" x 8" 1522957-266  
MATTE BLACK: FRONT 14" x 7" 1522956-458  
REAR 14" x 8" 1522957-458

## C 4202

FRONT WEIGHT: 5.8 kg | LOAD RATING: 408 kg | OFFSET: +4  
REAR WEIGHT: 6.1 kg | LOAD RATING: 590 kg | OFFSET: -9

ACCENT: FRONT 14" x 7" 1522544-266  
REAR 14" x 8" 1522545-266  
MATTE BLACK: FRONT 14" x 7" 1522544-458  
REAR 14" x 8" 1522545-458

## D 4203 BEADLOCK

FRONT WEIGHT: 5.9 kg | LOAD RATING: 408 kg | OFFSET: +4  
REAR WEIGHT: 6.6 kg | LOAD RATING: 590 kg | OFFSET: -9

MATTE BLACK: FRONT 14" x 7" 1522238-458  
REAR 14" x 8" 1522239-458

## E 4204

FRONT WEIGHT: 5.9 kg | LOAD RATING: 408 kg | OFFSET: +4  
REAR WEIGHT: 6.4 kg | LOAD RATING: 590 kg | OFFSET: -9

ACCENT: FRONT 14" x 7" 1522546-266  
REAR 14" x 8" 1522547-266  
MATTE BLACK: FRONT 14" x 7" 1522546-458  
REAR 14" x 8" 1522547-458

## F 4205

FRONT WEIGHT: 4.8 kg | LOAD RATING: 408 kg | OFFSET: +4  
REAR WEIGHT: 5.7 kg | LOAD RATING: 590 kg | OFFSET: -9

MATTE BLACK: FRONT 14" x 7" 1521507-521  
REAR 14" x 8" 1521508-521  
LUSTER: FRONT 14" x 7" 1521507-410  
REAR 14" x 8" 1521508-410

## G 4206

FRONT WEIGHT: 4.3 kg | LOAD RATING: 408 kg | OFFSET: +4  
REAR WEIGHT: 4.9 kg | LOAD RATING: 590 kg | OFFSET: -9

MATTE BLACK: FRONT 14" x 6" 1522542-458  
REAR 14" x 8" 1522543-458

## H 4301 BEADLOCK

WEIGHT: 7.3 kg | LOAD RATING: 726 kg | OFFSET: +38

ACCENT: FRONT/REAR 14" x 7" 1523284  
MATTE BLACK: FRONT/REAR 14" x 7" 1523283

## I HD DUAL BEADLOCK

WEIGHT: 18.1 kg | LOAD RATING: 725.7 kg | OFFSET: +38

MATTE BLACK: FRONT/REAR 14" x 7" 1524022-458

## KNOW YOUR WHEELS

### STEP 1: SELECT SERIES

4 = 40-SERIES

### STEP 2: CHOOSE LOAD RATING

1 = <362.9 kg  
2 = 363 - 589.7 kg  
3 = 590 - 726+ kg

### STEP 3: PICK STYLE

OFFSET / BEADLOCK / COLOUR

INCREASE OFFSET FROM STOCK = NARROWER STANCE  
DECREASE OFFSET FROM STOCK = WIDER STANCE

## 2 WAYS TO PURCHASE

INDIVIDUAL WHEELS & TYRES  
- OR -  
COMPLETE SETS AS LISTED

Exclusively at Polaris Authorised Dealers

## 14" FORGED BEADLOCK RINGS



PRO ARMOR FORGED RINGS Sold individually

	PART #
A Machined Only used on 4203 Beadlock & HD Dual Beadlock	1522244-266
B Beadlock Ring - Matte Black - 14" Only used on 4301 Beadlock & HD Dual Beadlock	1523146-458



# KNOW YOUR TERRAIN



- Tread patterns optimized for extreme traction
- Ideal for both hard pack and loose trail



- Extra deep treads
- Self-cleaning lugs



- Triple-belted sidewalls to resist puncture
- Purpose-built, long lasting tread patterns



- Handles extreme cold
- Holds shape and provides traction

## WHEEL & TYRE SETS



### 40-SERIES

#### TRAIL

ATTACK  
26"



DUAL-THREAT  
26"



#### MUD

MUD XC  
27"



#### UTILITY

PRESERVE  
27"



#### SNOW

WHITEOUT  
27"



4101 Matte Black						2882382
4201 Accent	2882390	2883138	2884272	2883208	2882388	
4201 Matte Black	2882391	2883139	2884273	2883209	2882389	
4202 Accent	2881335	2883140	2884267	2883203	2882383	
4202 Matte Black	2881336	2883141	2884268	2883204	2882384	
4203 BEADLOCK Matte Black BEADLOCKS SOLD SEPARATELY	2881381					
4204 Accent	2881347	2883142	2884270	2883205	2882385	
4204 Matte Black	2881348	2883143	2884271		2882386	
4205 Lustre	2881359	2883144				
4205 Matte Black	2881360	2883145	2884269	2883207	2882387	
4206 Matte Black	2881404					
4301 BEADLOCK Accent BEADLOCKS PRE-MOUNTED		2883217				
4301 BEADLOCK Matte Black BEADLOCKS PRE-MOUNTED		2883216				

### LUG NUTS

○ LUG NUTS REQUIRED



#### METRIC LUG NUTS FOR ALUMINIUM RIMS

- » 2877385 - SET OF 4
  - » 2877384 - SET OF 16
- SPORTSMAN XP

#### SAE LUG NUTS FOR ALUMINIUM RIMS

- » 2876754 - SET OF 4
  - » 2877409 - SET OF 16
- SPORTSMAN 450/570

### REPLACEMENT CAPS

#### CENTER CAP

LUSTER	ALL WHEELS EXCEPT 4204 & 4203 BEADLOCK	1521509-410
MATTE BLACK		1521509-521
HD MATTE BLACK	ALL WHEELS	5457498-458

#### PRO ARMOR CENTER CAP

LUSTER	ALL WHEELS EXCEPT 4204 & 4203 BEADLOCK	5453209-410
MATTE BLACK		5453209-458



#### COLBY VALVE SHORT ULTIMATE VALVE - 2 PACK

» 2883292



#### COLBY VALVE EMERGENCY VALVE - 2 PACK

» 2883293



#### COLBY COMBO VALVE KIT - 16 PACK

- Includes eight Ultimate Valves and eight Emergency Valves
- » 2883294





## POLARIS ENGINEERED ADVANTAGES

**MOUNTS PERFECTLY**  
Designed for your Polaris Engineered bumper, roof or other mounting point

### ADVANCED TECH

RIGID lights are driven by Aluminium PCB Smart Boards, 6063-T5 aircraft aluminium extruded housings and Tiger Drylac UV protection polyester powdercoating.

### EXCLUSIVE OPTICS

RIGID lights feature impact-resistant polycarbonate lenses for a 100% water/dustproof seal.

#### LIGHT BAR TYPES



#### SR-SERIES PRO

Sleek, powerful, low-profile (under 5 cm tall). Lights extreme distances with low energy usage.  
**Available in 25.4 cm**



#### D-SERIES PRO

Compact to fit almost anywhere with high output and low energy usage.  
**Available in Driving, Flood & Spot**

#### LIGHT BAR OPTIONS

##### OPTICS

##### DRIVING

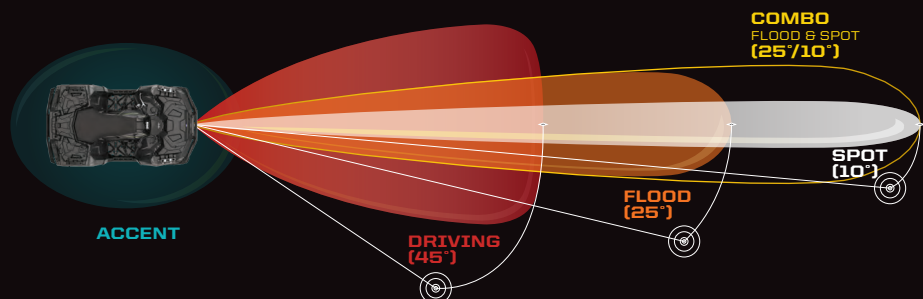
##### FLOOD

BRAND SIZE TYPE	RIGID POD D-SERIES	RIGID 25.4 cm SR-SERIES	RIGID POD D-SERIES	PRO ARMOR 27.9 cm SINGLE-ROW	PRO ARMOR CUBE DUAL-ROW
RAW LUMENS	4,752	7,920	3,168	1,890	1,400
PN	2883128	2883122	2883126	2882313	2882312
	Comes in a pair		Comes in a pair		

## BUILD YOUR VISION

Consider the optics, angle and how you will use your vehicle to choose the right light or set of lights.

OPTICS LIGHT ANGLE	ACCENT	DRIVING (45°)	FLOOD (25°)	SPOT (10°)	COMBO (25°/10°)
DRIVING SPEED	All	Slow	Medium	Fast	Medium to fast
BEAM	Diffused glow	Extra-wide	Wide/Shorter	Concentrated/Long	Inner spot & outer flood
RECOMMENDED MOUNTING	Low/Wheel well	All points	Low &/or rear	High points	All points
TERRAIN & RIDING STYLE	Added style & personalization in any terrain	All riding & utility	Wide-open terrain or trails & utility	Trail & tight conditions	All riding & utility





**MAX PERFORMANCE**  
Validated to work as hard as  
your machine does

**DOESN'T OVERTAX**  
Trust it to work when  
you need it to

# PRO ARMOR®



COMMON

WINCHES

570

XP10000 - XP1000 S

SCRAMBLER XP1000 S

MISC & YOUTH

PLOW & TRACKS

WHEELS & TYRES

LIGHTING

HUNT & COOLERS

## RUGGED CONSTRUCTION

Pro Armor lights are designed to be big and beefy with an aggressive style all their own, and housed in IP67 marine-grade rated UV polyester powdercoating.

## MASSIVELY BRIGHT

Pro Armor builds bright lights designed for any riding experience. All that power is directed through heat dissipating aluminium for streamlined heat management.



### DUAL-ROW LED LIGHT BARS

The most spread and farthest illumination downrange. Easy to mount.  
**Available in Cube, 25.4 cm & 50.8 cm**



### SINGLE-ROW LED LIGHT BARS

Powerful, compact, low-profile light bars with a sleek look.  
**Available in 27.9 cm & 50.8 cm**



### CUBE LED LIGHTS

Small size allows mounting in strategic locations for added lighting.  
**Available in Flood & Spot**

## SPOT

## COMBO

## OPTICS

1,200 m  
960 m  
720 m  
480 m  
240 m

**BRAND  
SIZE  
TYPE**  
RAW LUMENS  
PN

**RIGID**  
**25.4 cm**  
SR-SERIES

7,920

2883121

**RIGID**  
**POD**  
D-SERIES

3,168

2883127

Comes in a pair

**PRO ARMOR**  
**CUBE**  
DUAL-ROW

1,400

2882076

**RIGID**  
**25.4 cm**  
SR-SERIES

7,920

2883123

**PRO ARMOR**  
**50.8 cm**  
DUAL-ROW

8,820

2883107

## POLARIS ENGINEERED



### LED LIGHTING

#### LED LIGHT KIT

• Upgrade your standard headlights and pod lights to LEDs with this upgrade kit

» 2884859

SPORTSMAN XP 1000 S '21-22, SPORTSMAN 850/1000 '21-22, SPORTSMAN 450/570 '21-22

### WIRING HARNESSES

#### LIGHTBAR HARNESS

• Control one light with one switch

» 2882320

ALL SPORTSMAN MODELS

#### LED Y-HARNESS

• Requires 2882320 to control two cubes or two lights with one switch

» 2879860

ALL SPORTSMAN MODELS



# PROTECTING YOUR ESSENTIAL GEAR SINCE 1943



## KOLPIN STRONGHOLD SYSTEM

Polaris is proud to partner with Kolpin Outdoors, an industry leader in off-road accessories and the premier name in gun boots and mounts. If you need to secure a firearm while riding, simply attach the auto-latch mount and choose your Gun Boot.

### IDEAL FOR SECURE TRANSPORT OF SCOPED RIFLES AND SHOTGUNS

#### STEP 1 CHOOSE YOUR MOUNT



##### STRONGHOLD AUTO-LATCH MOUNT

- The auto-latching design provides quick and secure Kolpin Stronghold product attachment
- Bracket is made from rugged high impact, reinforced nylon and coated steel with precision angle adjustment for a custom fit
- For use with the Kolpin Stronghold line of products (sold separately)

##### » 2882272

SPORTSMAN 850/1000 '17-22

Does not fit with Ultimate Series – Body Armor (2882090)

##### STRONGHOLD AUTO-LATCH MOUNT

- The Auto-latching design provides quick and secure Kolpin Stronghold product attachment
- Bracket is made from rugged high impact, reinforced nylon and coated steel with precision angle adjustment for a custom fit
- For use with the Kolpin Stronghold line of products (sold separately)

##### » 2884846

SPORTSMAN 450/570 '21-22

#### STEP 2 CHOOSE YOUR BOOT



##### GUN BOOT L

- 132.1 cm L x 12.1 cm W x 23.5 cm H
- Requires Auto-Latch Mount 2882272 or 2884846 to mount to vehicle

##### » 2882426

SPORTSMAN 850/1000 '17-22,  
SPORTSMAN 450/570 '14-22





Never transport a loaded firearm. Verify firearm is unloaded prior to mounting. Please refer to local laws and regulations regarding the requirements for the legal transport of firearms.



#### GUN BOOT XL

- Lockable and TSA Approved
- Includes padded, zippered internal protective liner
- 132.1 cm L x 9.5 cm W x 26.6 cm H
- Requires Auto-Latch Mount 2882272 or 2884846 to mount to vehicle

» 2882036

XP 1000 '17-22, 850 '17-22, 570 '19-22, 450 H.O. '21-'22



## KOLPIN RHINO GRIP

IDEAL FOR CARRYING RIFLES, SHOTGUNS, BOWS AND CROSSBOWS.



#### LOCK & RIDE RHINO GRIP PRO

» 2884119

» 2884109 • REPLACEMENT RUBBER STRAPS

ALL SPORTSMAN MODELS  
(EXCEPT UTILITY EDITIONS & YOUTH)



#### LOCK & RIDE RATCHETING RHINO GRIP

» 2881157

ALL SPORTSMAN MODELS (EXCEPT UTILITY AND YOUTH)



#### LOCK & RIDE RHINO GRIP XLR

» 2889147

» 2889204 • RHINO GRIP XLR  
REPLACEMENT RUBBER STRAPS (2)

ALL SPORTSMAN MODELS  
(EXCEPT UTILITY EDITIONS & YOUTH)



#### LOCK & RIDE RHINO GRIP XLR – DOUBLES

» 2889148

» 2889204 • RHINO GRIP XLR  
REPLACEMENT RUBBER STRAPS (2)

ALL SPORTSMAN MODELS  
(EXCEPT UTILITY EDITIONS & YOUTH)



#### KOLPIN GUN BOOT IV

- For 50mm scopes, rifles with slings attached, or shotguns up to 129.54 cm in length

» BLACK • 2872677



#### LOCK & RIDE GUN BOOT MOUNTS

- Works with Lock & Ride XL Storage Box, Lock & Ride Rear Cargo Box, and Rear Rack Extenders

» 2878001

SPORTSMAN 850/1000 TOURING '10-22

Only Compatible with Kolpin Gun Boot IV – Not Compatible with Kolpin Stronghold Gun Boots



# KEEP IT ICE COLD

**28, 57 & 99**  
LITRE FEATURES



ComfortCarry  
Handles



TravelLock  
System



EasyOut  
Drain System



NoSlip  
Rubber Feet



PolarWall  
Insulation



IceLock  
Seal



**99 LITRE**

- » GRAPHITE • 2883426
- » DESERT • 2883392



**57 LITRE**

- » GRAPHITE • 2883425
- » DESERT • 2881259



**28 LITRE**

- » GRAPHITE • 2883424
- » DESERT • 2881315

## ESSENTIAL ACCESSORIES SO YOUR COOLER WORKS AS HARD AS YOU DO

COOLER ACCESSORIES		99 LITRE	57 LITRE	28 LITRE
	<b>WIRE BASKET</b>	2883648	2882185	2882438
	<b>DIVIDERS</b> Doubles as cutting board	2883468 COMES WITH ONE DIVIDER  1 way to partition	2882184 COMES WITH TWO DIVIDERS  2 ways to partition	2882186 COMES WITH ONE DIVIDER  1 way to partition
	<b>SEAT CUSHION</b>	NOT AVAILABLE	2882179	2882507
	<b>WHEELS</b>	2883967	2882180	NOT AVAILABLE



# GRIZZLY TESTED.

## POLARIS APPROVED.



This cooler is IGBC-approved, meaning it withstands the power expended by a typical grizzly bear if it was trying to get inside.

Seriously, there are experts who know what a grizzly is capable of doing, and they certify our coolers can take it.



**POLARIS NORTHSTAR COOLERS CAN SURVIVE JUST ABOUT ANYTHING  
- FROM EXTREME HEAT TO A NASTY TUMBLE OFF A VEHICLE.**



**14 LITRE**

» GRAPHITE • 2883968



**NEW 19 LITRE  
SOFT-SIDED COOLER**

» GRAPHITE • 2889285

### DON'T FORGET THESE ACCESSORIES



887 ml

**TUMBLERS**

» 887 ml • 2883394

» 591 ml • 2883393



**BOTTLE OPENER**

» 2882183

ALL COOLERS



# FOR THE LIFE OF YOUR RIDE

## MAINTENANCE TIP

### BREAK-IN PERIOD

The break-in period for your new SPORTSMAN is the first 25 hours of operation, or the time it takes to use the first two tanks of fuel. No single action on your part is as important as a proper break-in period. Careful treatment of a new engine will result in more efficient performance and longer life for the engine.

NOTICE: Excessive heat build-up during the first three hours of operation will damage close-fitted engine parts. Do not operate at full throttle or high speeds for extended periods during the first three hours of use.

### BATTERY

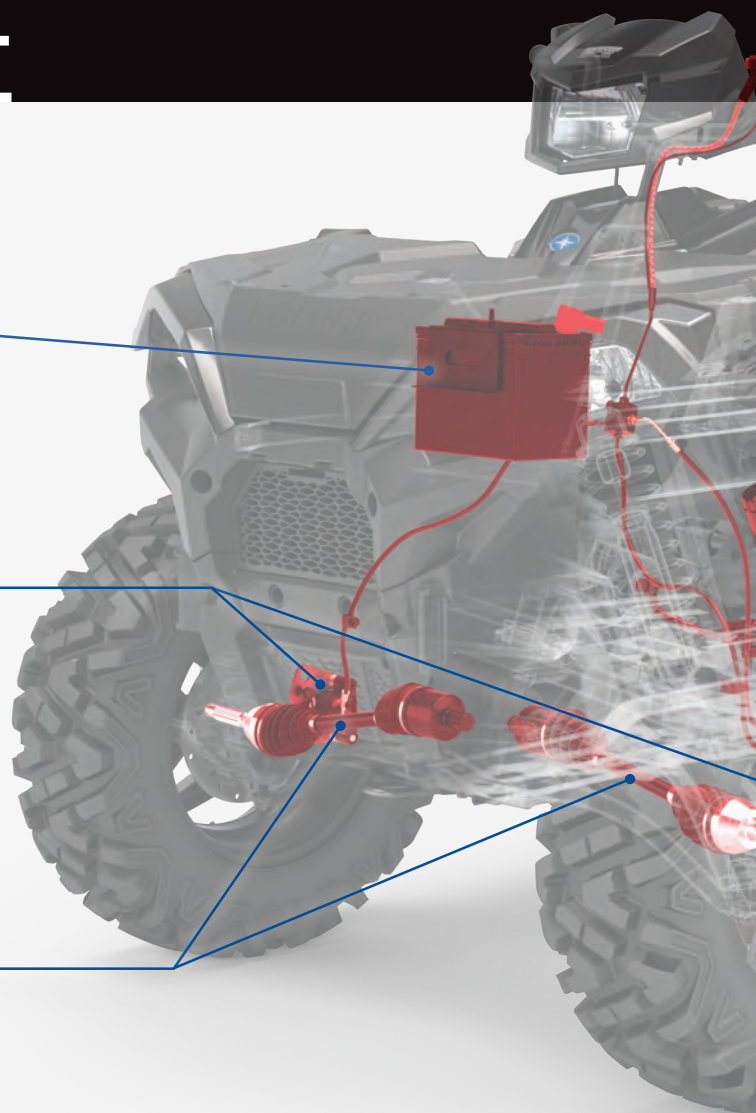
To ensure a battery maintains its level of charge when unused for extended periods of time or during freezing weather, the battery should be connected to a suitable battery charger. Be sure to check for corrosion from the terminals to the ends of the cables.

### BRAKE PADS

Maintaining and/or replacing brakes are critical to the safety and functionality of a vehicle. Brake pads should be checked for wear and oil or grease (petroleum products) contamination and brake discs should be checked for cracks, excessive corrosion or warping.

### HALF SHAFT

Check for tears and punctures in the boot, which can lead to CV joint wear that can contribute to axle failure.



## MAINTENANCE SCHEDULE

25 HRS / 400 km

### BREAK-IN MAINTENANCE

**ENGINE OIL:**  
CHANGE

**GEARCASES:**  
CHECK OIL LEVEL

**AIR FILTER:**  
INSPECT & REPLACE  
AS NEEDED

**EXHAUST SYSTEM:**  
INSPECT & CLEAN  
INSPECT FOR LEAKAGE OR  
CARBON BUILD UP AT JOINTS  
INSPECT & CLEAN SCREEN  
TYPE SPARK ARRESTOR

50 HRS / 800 km

### 6 MONTHS

**EXHAUST SYSTEM:**  
INSPECT & CLEAN  
INSPECT FOR LEAKAGE OR  
CARBON BUILD UP AT JOINTS  
INSPECT & CLEAN SCREEN  
TYPE SPARK ARRESTOR

**GENERAL  
LUBRICATION:**  
ALL FITTINGS,  
PIVOTS, CABLES, ETC.

**DRIVE BELT:**  
INSPECT & ADJUST  
REPLACE AS NEEDED

100 HRS / 1,600 km

### 12 MONTHS

**ENGINE OIL:**  
CHANGE

**DRIVE BELT:**  
INSPECT & ADJUST  
REPLACE AS NEEDED

**SPARK PLUGS:**  
REPLACE

**EXHAUST SYSTEM:**  
INSPECT & CLEAN  
INSPECT FOR LEAKAGE OR  
CARBON BUILD UP AT JOINTS  
INSPECT & CLEAN SCREEN  
TYPE SPARK ARRESTOR

150 HRS / 2,400 km

### 18 MONTHS

**BATTERY:**  
TEST, CLEAN &  
CHECK FLUID LEVEL  
IF NECESSARY, REPLACE AS  
NEEDED

**DRIVE BELT:**  
INSPECT & ADJUST  
REPLACE AS NEEDED

**TYRES:**  
INSPECT CONDITION  
& PRESSURE

**EXHAUST SYSTEM:**  
INSPECT & CLEAN  
INSPECT FOR LEAKAGE OR CARBON  
BUILD UP AT JOINTS  
INSPECT & CLEAN SCREEN  
TYPE SPARK ARRESTOR



## PARTS THAT PUSH THE LIMITS WITHOUT SACRIFICING STRENGTH AND DURABILITY.

We build our products so anyone with the right tools can maintain their vehicle.

# POLARIS

## ENGINEERED PARTS & LUBRICANTS

PARTS & GARAGE

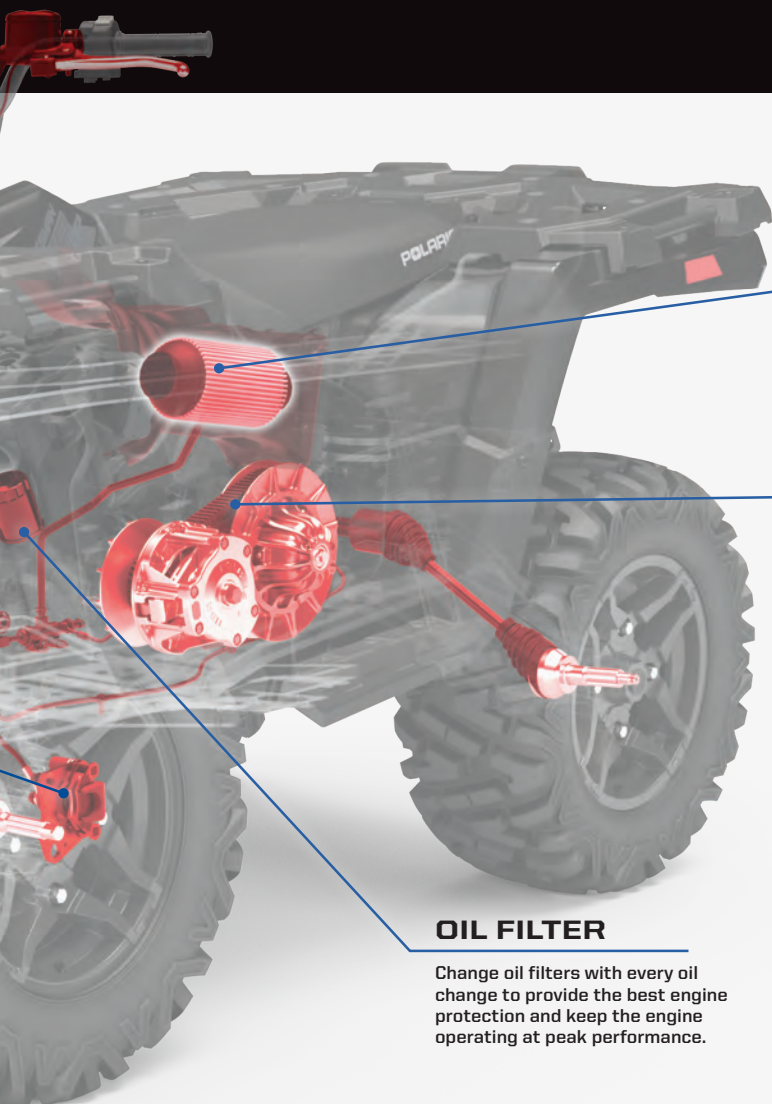
MAINTENANCE

OIL & LUBRICANTS

HD PARTS

SERVICE PARTS

CLEANERS  
& TRAILERING



### AIR FILTER

A clogged air filter can restrict air flow to the engine leading to reduced engine performance, engine life or catastrophic failure.

### DRIVE BELT

Polaris Engineered belts deliver unmatched performance for your off-road vehicle. Developed and tested on all our engines for all environments and conditions. Check your belt for delamination, hour glassing and glazing.

#### BREAK-IN PERIOD

- Use lower gear (if available) while varying speeds and avoid wide open throttle for 8-16 km
- If no low gear is available, vary at moderate speeds while avoiding wide open throttle for 80 km

#### OUR INVESTMENT

- 32,187 km of field testing
- Thousands of dyno hours
- 18+ months of development (13,000+ design hours) per belt
- 1,500+ vehicle validation hours
- Collaboration with powertrain and clutch engineers

#### YOUR ADVANTAGE

- No clutch recalibration
- Less wear and tear due to heat
- Ensure maximum vehicle performance
- More time riding, less time wrenching
- Produced in collaboration with powertrain and clutch engineers to ensure a perfect fit, maximum performance and ultimate durability

### OIL FILTER

Change oil filters with every oil change to provide the best engine protection and keep the engine operating at peak performance.

FOLLOW RECOMMENDED SERVICE INTERVALS IN THE OWNER'S MANUAL

200 HRS / 3,200 km

## 24 MONTHS

**ENGINE OIL:**  
CHANGE

**TRANSMISSION FLUID:**  
CHANGE

**GEARCASES:**  
CHECK OIL LEVEL

**BRAKE PADS & FLUID:**  
INSPECT & CLEAN  
REPLACE AS NEEDED

**SPARK PLUGS:**  
REPLACE

**EXHAUST SYSTEM:**  
INSPECT & CLEAN  
INSPECT FOR LEAKAGE OR  
CARBON BUILD UP AT JOINTS  
INSPECT & CLEAN SCREEN TYPE  
SPARK ARRESTOR

250 HRS / 4,023 km

## 30 MONTHS

**ENGINE OIL:**  
CHANGE

**BATTERY:**  
TEST, CLEAN &  
CHECK FLUID LEVEL  
REPLACE AS NEEDED

**DRIVE BELT:**  
INSPECT & ADJUST  
REPLACE AS NEEDED

**GENERAL LUBRICATION:**  
ALL FITTINGS,  
PIVOTS, CABLES, ETC.

**EXHAUST SYSTEM:**  
INSPECT & CLEAN  
INSPECT FOR LEAKAGE OR  
CARBON BUILD UP AT JOINTS  
INSPECT & CLEAN SCREEN  
TYPE SPARK ARRESTOR

300 HRS / 4,828 km

## 36 MONTHS

**ENGINE OIL:**  
CHANGE

**AIR FILTER:**  
INSPECT & REPLACE  
AS NEEDED

**GEARCASES:**  
CHECK OIL LEVEL

**SPARK PLUGS:**  
REPLACE

**EXHAUST SYSTEM:**  
INSPECT & CLEAN  
INSPECT FOR LEAKAGE OR  
CARBON BUILD UP AT JOINTS  
INSPECT & CLEAN SCREEN  
TYPE SPARK ARRESTOR

CHECK YOUR  
OWNER'S MANUAL  
FOR ADDITIONAL  
RECOMMENDED  
SERVICE ITEMS  
AND VEHICLE-  
SPECIFIC TIMING



# POLARIS

## ENGINEERED PARTS & LUBRICANTS

### FOR THE LIFE OF YOUR RIDE ONLY THE BEST WILL DO

To create the best oil for any terrain, we invest in rigorous testing to ensure our oil delivers the consistency and performance you demand. The results are Polaris Engineered Lubricants that are tested and perfected to deliver excellent total engine protection for the life of your ride.

### WHAT COUNTS IN OIL TESTING:

1. Does it protect the engine at high temperatures?
2. Does it keep the engine free from carbon and buildup?
3. Does the oil hold its viscosity over time?

### ENGINE CHECKPOINTS

When evaluating an engine oil and its ability to protect and preserve the engine's power output and lifespan, Polaris engineers focus on key areas within the engine, some of the most critical ones include:

**RING LANDS:** Poor oxidative performance can lead to carbon and varnish buildup, which results in poor ring seal and loss of power, combustion blow by and fuel dilution of the oil.

**PISTON RINGS:** During the combustion process, extreme pressures are placed on the top ring, forcing it outward toward the cylinder wall, sealing the combustion chamber. With so much force applied, poor oil film strength between the top ring and the cylinder wall can lead to cylinder wear and loss of power.

**ROD BEARINGS:** Engine bearings ride on an extremely thin hydrodynamic film of oil. Poor oil film strength or using an oil with a thinner viscosity, can lead to premature bearing wear or even engine failure. Using an oil with high film strength and a strong viscosity, like PS-4 full synthetic, will extend the service life of your engine.

**CAMSHAFT:** Direct Acting Overhead Camshafts are used on many Polaris Prostar Engines. In this application the camshaft pushes directly on the valve, creating very high contact pressures compared to other camshaft configurations. These forces are so great that inferior oil can break down and be forced out of the contact area leading to increased wear. PS-4 full synthetic additives are specifically designed to provide wear protection against this.

### OIL DEVELOPMENT

**12 DEDICATED  
TEAM MEMBERS**

**FOCUSED ON  
POLARIS OIL**

**18+  
MONTHS**

**DEVELOPMENT  
& TESTING**

**64,374  
KILOMETERS**

**FIELD  
TESTING**

**75,000+  
HOURS**

**DYNO  
TESTING**



# SPECIFIC NEEDS, SPECIFIC OILS

Polaris invests millions in engine development, and part of that investment is making sure its lubricants—critical to engine performance—are the right formula for your specific engine. The amount of testing data and engineering resources used in developing Polaris lubricants would overwhelm an aftermarket company. Therefore, the aftermarket must spec an oil to an industry-wide standard that must account for a variety of operating parameters.

PS-4 is designed specifically for Polaris 4-cycle engines and has high film strength and wear protection under extreme loads and temperatures. Exclusive anti-wear additives protect engine parts with extra rust and corrosion protection.

### PS-4 SYNTHETIC PERFORMANCE OIL

- PS-4 is optimal for ambient operating temperatures of -40° C to 40° C

1L • 502484  
4L • 502485  
25L • 502486  
60L • 502487  
200L • 502488

### PS-4 OIL CHANGE KIT

- Contains the correct amount of oil for your vehicle and correct oil filter

› 502541  
SINGLE 570, TWIN 600, TWIN 700, TWIN 800  
› 502543  
RANGER/RZR 900/1000  
› 502542  
330500, SPORTSMAN 550/850/1000

### PS-4 EXTREME- DUTY SYNTHETIC PERFORMANCE OIL

- PS-4 Extreme Duty is optimal for ambient operating temperatures of -20° C to 55° C

1L • 502491  
4L • 502492  
25L • 502494  
60L • 502496  
200L • 502497



# ENGINEERED TO MAXIMISE THE LIFE OF YOUR RIDE

All Polaris fluids—from anti-freeze to brake fluid—are developed for your vehicle. Trust the only fluids perfectly engineered for your needs.



## DOT 4 BRAKE FLUID



Polaris DOT 4 Brake Fluid is a high-quality brake fluid designed for use in Polaris hydraulic brakes. Superior high-temp characteristics plus anti-corrosive additives extend the life of brake system components and provide consistent, positive braking.

» 250 ml • 502526

## ANTI-FREEZE



Polaris Extended Life Coolant contains organic acid technologies to prevent corrosion on metal components, eliminate scaling, and maximise cooling system performance.

» 1 L • 502566

» 25 L • 502567

» 206 L • 502568

## AGI



A proprietary blend of additives designed to optimize Polaris® ORV transmission life. Extreme pressure additives protect gears, drive chain, and bearings from scoring and wear. Unlike typical gear case oils, AGI's unique viscosity range allows instant flow and film protection in extreme cold or high heat environments.

» 1 L • 502505

» 25 L • 502507

» 200 L • 502508

## DEMAND DRIVE FLUID



Engineered specifically for Polaris ORV front drive systems. Provides positive 4WD engagement in extreme cold or high heat conditions. Unique friction additives protect internal components under heavy loads and promote positive engagement.

» 1 L • 502563

» 25 L • 502564

» 200 L • 502565

Proper lubricant application and timing will ensure optimal vehicle performance. Please refer to your owner's manual for lubricant change interval schedules.



## CARBON CLEAN

Polaris Carbon Clean prevents ethanol corrosion, stabilizes fuel, and cleans fuel injectors, piston ring lands, intake systems, and combustions chambers. Helps maintain peak HP and improves fuel economy.

» 125 ml • 502528



## FUEL STABILIZER

Fuel Stabilizer prevents ethanol corrosion and stabilizes fuel for up to 2 years. Dual-antioxidant formula protects against gum and varnish for easy starting.

» 125 ml • 502519



## ANGLE DRIVE FLUID

» 1 L • 502510

» 25 L • 502511

» 202 L • 502512

SPORTSMAN,  
RANGER, RZR  
ANGLE DRIVE GEAR  
CASE SYSTEMS



## PREMIUM GAS SHOCK OIL

» 1 L • 502518



## ALL-SEASON GREASE TUBE

» 400 g • 502538



# HD HEAVY DUTY PARTS

All Polaris parts are developed and tested to help you get the most out of your ride. We're taking the passion of our riders, workers and outdoor enthusiasts to the next level with HD Parts.

Engineered and designed for:

- Greater durability
- Enhanced performance
- Greater wear and tear capabilities
- All weather conditions



## NEW DRIVE BELTS

The enhanced rubber material compound in these belts keep them cool in extreme heat, while our patented cord treatment process maximises the transfer of horsepower to the ground for those customers hauling heavy loads.

OE	HD HEAVY DUTY PARTS
3211149	3212326
3211077	3212328
3211113	3212332
3211160	3212331



## NEW OIL FILTERS

The advanced synthetic material built into these filters offers the highest debris holding capacity, maintains oil flow and maximises performance.

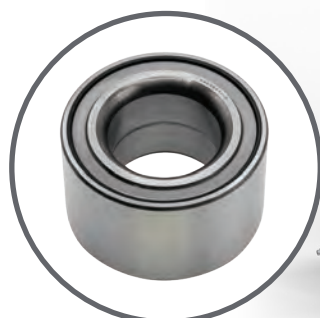
OE	HD HEAVY DUTY PARTS
2520799	2522485
2540086	2522498



## WHEEL BEARINGS

Fully sealed for added protection against intrusions. Made of a higher grade steel for extended life in extreme conditions.

LOCATION	OE	HD HEAVY DUTY PARTS
FRONT WHEEL BEARINGS	3514822	3515090
	3514634	3515088
REAR WHEEL BEARINGS	3514917	3515087



## WHEELS & TYRES

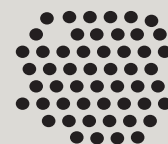
Class leading durability for off-road performance and traction for confident driving in extreme conditions.

- » 1524022-458 • HD WHEEL - 14x7
- » 5457498-458 • HD WHEEL CENTER CAP



Claims made based off testing and performance of Polaris HD Parts against standard OEM parts made by Polaris and competitor brands under normal use.





SAND



MUD



WATER



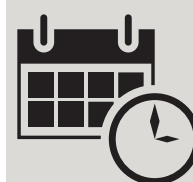
EXTREME COLD



EXTREME HEAT UP TO 54° C



HEAVY PAYLOADS



EXTENDED LIFE

PARTS & GARAGE

MAINTENANCE

OIL & LUBRICANTS

HD PARTS

SERVICE PARTS

CLEANERS & TRAILERING



## BUSHINGS

The advanced material compound of the bushings enables tighter tolerances to reduce overall wear on the system, while the superior triple lip sealing prevents intrusion of the elements.

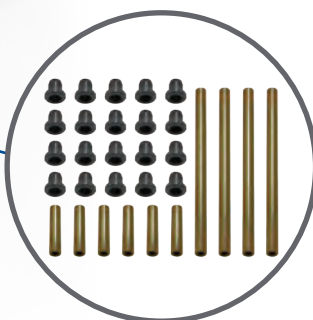
LOCATION	OE	HD <small>HEAVY DUTY PARTS</small>
FRONT UPPER BUSHINGS	5439874	1543367
FRONT LOWER BUSHINGS	5439874	1543367
	5436973	1543326
REAR UPPER BUSHINGS	5439874	1543367
	5438895	1543326
REAR LOWER BUSHINGS	5439874	1543367
	5436973	1543326



## BRAKES

Engineered to provide longer life and better stopping power while riding in extreme conditions.

LOCATION	OE	HD <small>HEAVY DUTY PARTS</small>
FRONT	2205949	2208933
FRONT/REAR	2202413	2208934
	2202412	2208935



## BUSHING KITS

Easily update the entire front and rear suspension.

- » **2830562 (SHOWN)**  
 570 EFI '16-'20, 570 EFI X2 '16-'20, 570 EFI TOURING '16-'20, 570 EPS UTILITY '20, 450 HO '16-'20, 450 UTILITY '20
- » **2830563**  
 570 SP '16-'19, 570 PREMIUM '19, 570 SP TOURING '16-'20

For more information regarding Polaris HD parts including vehicle compatibility, installation and maintenance, please contact your authorised Polaris ORV dealer.



# SERVICE PARTS

Polaris Engineered service parts deliver unmatched performance and fit for your off-road vehicle.

All service parts are engineered specifically for your machine. Which means everything is designed, tested and perfected to maximise the life of your ride. Getting Polaris Engineered parts is a decision that pays off in the long run, because it ensures there is a long run.



**VISIT YOUR POLARIS DEALER TO  
SHOP FOR SERVICE PARTS.**

**OVER  
100,000  
PARTS  
AVAILABLE!**





# FOR THE LIFE OF YOUR RIDE

Maintenance is the key to keeping your Polaris off-road vehicle performing at its peak. Items like belts, lubricants, and batteries represent only a few of these critical items engineered specifically by Polaris.



## POLARIS ENGINEERED DRIVE BELTS

### TESTED, PERFECTED

We test each belt on the intended vehicle – we don't just try to make an existing belt "just work".

– Amery Kuhl, Polaris CVT System Engineer

#### OUR INVESTMENT

- 32,187 km of field testing
- Thousands of dyno hours
- 18+ months of development (3,000+ design hours) per belt
- 1,200+ vehicle validation hours
- Collaboration with powertrain & clutch engineers

#### YOUR ADVANTAGE

- No clutch recalibration
- Less wear & tear due to heat
- Ensure maximum performance of your vehicle
- More time out riding, less time wrenching

**OUR INVESTMENTS ENSURE POLARIS BELTS  
OUTPERFORM YOUR EXPECTATIONS.**



# CV BOOT REPAIR KIT\*

FIX ON THE GO | TEMPORARY COVERAGE

- A quick trail-side fix to increase trail time
- The flexible and durable boot material expands "over a cone tool for CV boot repairs, without disassembling CV axles
- Universal fit - works as a temporary fix for most powersports axles
- All components fit inside the cone, and a cover is provided for compact durable storage
- Easily fits in a cargo box, attached to the roll cage, in the glovebox or many other storage locations



Items shown are contained inside cone

## ATV CV BOOT REPAIR KIT

Kit includes the following items:

- (1) Expandable CV Boot
  - (1) Reusable Cone Tool
  - (2) CV Boot Clamps
  - (1) Tube of Silicone Lube
  - (1) Grease Packet
  - (1) Cone Cover
- » 2830528

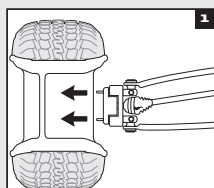
## ATV TRAIL BOOT ONLY

» 2830529

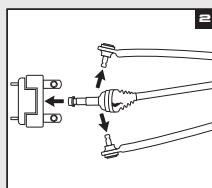
## UTV

- » CV REPAIR KIT 2830526
- » TRAIL BOOT ONLY 2830527

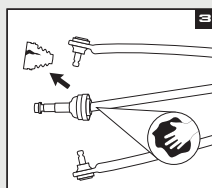
## HOW TO INSTALL



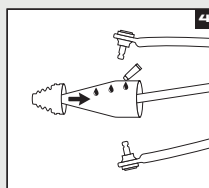
Remove wheel and axle nut.



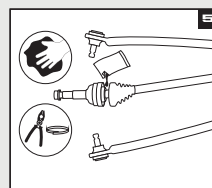
Remove brake caliper, hub, tie rod and upper and lower ball joints.



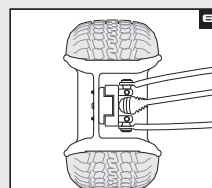
Remove old boot and clean joint.



Spread silicone lube on entire cone tool. Slide boot over cone tool, large end first. See package for outer boot instructions.



Empty the bag of grease into the CV joint/boot, clean sealing points and install clamps.



Reassemble tie rod, ball joints, brake caliper, axle nut, tyre and wheel.

Refer to your service manual for further instructions and torque specifications.

\*Designed for temporary CV boot repair. Purchase the OEM CV Boot for a permanent repair.

# KEEP IT CLEAN

## CLEAN

### ALL-PURPOSE CLEANER

- Professional cleaner, which is formulated with a low pH-value. The product spreads well on surfaces and adheres on them for effective cleaning action. Perfectly compatible with rubber, plastic and painted surfaces. The formulation is biodegradable.

» 500 ml • 502309

## SHINE

### INSTANT SHINE & DETAILER

- The INSTANT SHINE AND DETAILER is developed for cleaning action without water. Removes insects, dust and dirt with almost no effort. Applicable for plastics, visors, windscreens, paint and metal. The wipe and shine formulation makes surfaces shine, works water repellent and also has an antistatic effect. Perfect for customers living in urban areas with no access to water, for bike trips or showroom bikes.

» 500 ml • 502303





# BRING IT EVERYWHERE

## TRAILERING



### CALIBER RAMP PRO

- Designed for ATVs and UTVs up to 127 cm wide
  - Integrated grip glides for ultimate traction
  - Folding sides for easy transportation and storing
- » 132 cm × 229 cm • 2884576



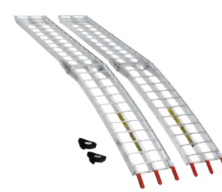
### ALUMINIUM ARCHED LOADING RAMPS

- Capacity for up to 1,361 kg
- » 193 cm × 30.5 cm • 907 kg • 2875384  
» 224 cm × 30.5 cm • 1,361 kg • 2875386



### LIGHTWEIGHT TRI-FOLD RAMPS

- Ramp folds up for transport
  - Capacity for up to 680.7 kg
  - Safety straps included
- » 183 cm × 130 cm • 2875385  
» 208 cm × 130 cm • 2875860



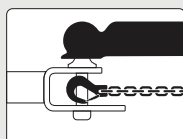
### FOLDING ALUMINIUM ARCHED RAMPS

- Ramp folds up for transport
  - Up to 680 kg total capacity, 340 kg per individual ramp
  - Safety straps included
- » 224 cm × 30.5 cm • 2875387

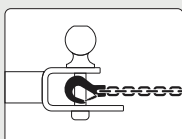
## HITCHES

### 3:1 HITCHES

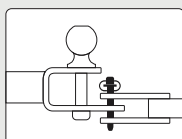
VERSATILE 3 IN 1 FUNCTIONALITY



BALL



HOOK



PIN

- Ball, hook and pin design
- Durable, rust resistant steel with black powdercoated finish
- Removable ball
- HD 1.6 cm pin and clip



### HITCH WITH 5 cm BALL

- » 5 cm × 5 cm RECEIVER  
2830522  
» 3 cm × 3 cm RECEIVER  
2830523



### 4.8 cm BALL

- 4.8 cm replacement ball for hitch
  - Designed to work with 3:1 Hitch
- » 2830524



### RECEIVER HITCH

- » 5 cm RECEIVER TONGUE  
2875320



### TRAILER BALL AND SHANK

- » 4.8 cm BALL • 2877602  
» 5 cm BALL • 2877603

## STRAPS & ROPES



### RECOVERY STRAP

- 5 cm × 9.1 m
  - 8,165 kg maximum load / 4,082 kg maximum vehicle weight
  - Comes with carry bag
- » 2884033



### RATCHET STRAP

- 3.8 cm × 4.6 m straps, 2 Pack
  - Heavy duty webbing
  - 2,495 kg maximum load, 831 kg working load
- » 2884031



### RATCHET STRAP

- 5 cm × 6.1 m Ratchet Straps
  - Heavy duty webbing, floating D-rings, double J-hooks
  - 4,536 kg maximum load, 1,497 kg working load
- » 2884032



### SHOCK STRAPS

- 3.8 cm 1,361 kg breaking strength
  - Keeps tension on tie-down straps to secure load, 2 Pack
- » 3.8 cm × 4.6 m • 2883296  
» 3.8 cm × 2.1 m • 2883295

## COVERS

### TRAILERABLE COVER

- » 2876614  
SPORTSMAN 450/570,  
SPORTSMAN 850/1000  
REPLACEMENT STRAP 2871912.
- » 2877999  
ALL SPORTSMAN TOURING  
REPLACEMENT STRAP 2871912.
- » 2884188  
XP 1000 S, SCRAMBLER XP 1000 S





# FORGE YOUR OWN PATH



AVAILABILITY VARIES BY MARKET, CHECK YOUR LOCAL DEALER FOR AVAILABILITY. IMAGE TAKEN ON PRIVATE LAND. THE USE OF VEHICLES IN SIMILAR ENVIRONMENTS IN YOUR JURISDICTION MAY BE PROHIBITED PER LOCALLY APPLICABLE LAWS AND REGULATIONS. CAMPFIRE IN SIMILAR ENVIRONMENTS IN YOUR JURISDICTION MAY BE PROHIBITED PER LOCALLY APPLICABLE LAWS AND REGULATIONS. KEEP YOUR CAMPFIRE SAFE, AND MAKE SURE YOU CAN CONTROL IT AT ALL TIMES. KNOW YOUR LOCALLY APPLICABLE LAWS AND REGULATIONS. CROSSING WATER IN SIMILAR ENVIRONMENTS MAY BE PROHIBITED IN YOUR JURISDICTION.

WARNING: POLARIS OFF-ROAD VEHICLES CAN BE HAZARDOUS TO OPERATE AND ARE NOT INTENDED FOR ON-ROAD USE. DRIVER MUST BE AT LEAST 16 YEARS OLD WITH A VALID DRIVER'S LICENCE TO OPERATE. ALL RIDERS SHOULD ALWAYS WEAR HELMETS, EYE PROTECTION AND PROTECTIVE CLOTHING AND FOOTWEAR. READ, UNDERSTAND AND FOLLOW YOUR OWNER'S MANUAL. RIDE WITHIN THE LIMITS OF YOUR OWN ABILITIES AND NEVER ENGAGE IN STUNT OR EXHIBITION DRIVING. NEVER RIDE UNDER THE INFLUENCE OF DRUGS OR ALCOHOL. ALL RIDERS SHOULD TAKE A SAFETY TRAINING COURSE. CALL 800-342-3764 FOR ADDITIONAL INFORMATION.

Unless noted, trademarks are the property of Polaris Industries Inc. 3M® and Thinsulate® are registered trademarks of 3M Company. 509® is a registered trademark of Teton Outfitters, LLC. App Store® is a registered trademark of Apple Inc. BatteryMinder® is a registered trademark of VDC Electronics Inc. Bluetooth® is a registered trademark of Bluetooth Sig. Inc. Caliber® is a registered trademark of Caliber, Inc. CAMSO® is a registered trademark of Artic Investments S.A. COOLCORE® is a registered trademark of COOLCORE LLC. Facebook® is a registered trademark of Facebook, Inc. FidoLock® is a registered trademark of FidoLock GmbH. Google Play® is a registered trademark of Google, Inc. Instagram® is a registered trademark of Instagram, LLC. Kolpin® is a registered trademark of Polaris Industries Inc. Polartec® is a registered trademark of MMI-IPCO, LLC. RIGID® is a trademark of JST Performance, LLC d/b/a Rigid Industries, LLC. Rockford Fosgate® is a registered trademark of Rockford Corporation. SMART BOARD® is a registered trademark of MART TECHNOLOGIES ULC. UNLIMITED LIABILITY CORPORATION CANADA. TEKVEST® is a registered trademark of 1181676 ONTARIO INC. Tiger Drylac® is a registered trademark of TIGER COATINGS GMBH & CO. KG. Velcro® is a registered trademark of VELCRO BVDA. Twitter® is a registered trademark of Twitter, Inc. WALKER EVANS RACING® is a registered trademark of Walker Evans Enterprises Incorporated. Yeti® is a registered trademark of Yeti Coolers, LLC. YKK® is a registered trademark of YKK Corporation. YouTube® is a registered trademark of Google Inc. Prices, Fitment and Availability are subject to change at any moment. Copyright © 2021 Polaris Industries Inc. All rights reserved.

# POLARIS

MY22 SPTSMN APP ACC EMEA